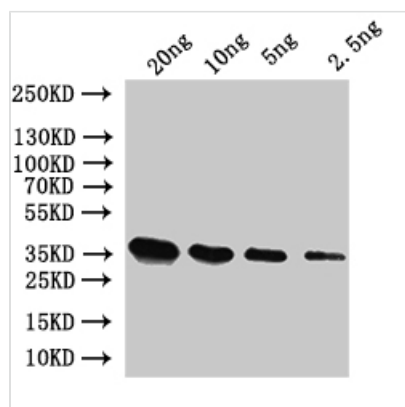




SUI2 Antibody

| | |
|----------------------------|--|
| Product Code | CSB-PA323232XA01SVG |
| Storage | Upon receipt, store at -20°C or -80°C. Avoid repeated freeze. |
| Uniprot No. | P20459 |
| Immunogen | Recombinant Saccharomyces cerevisiae (strain ATCC 204508 / S288c) (Baker's yeast) SUI2 protein (1-304aa) |
| Raised In | Rabbit |
| Species Reactivity | Saccharomyces cerevisiae (strain ATCC 204508 / S288c) (Baker's yeast) |
| Tested Applications | ELISA, WB; Recommended dilution: WB:1:500-1:5000 |
| Form | Liquid |
| Conjugate | Non-conjugated |
| Storage Buffer | Preservative: 0.03% Proclin 300 Constituents: 50% Glycerol, 0.01M PBS, pH 7.4 |
| Purification Method | >95%, Protein G purified |
| Isotype | IgG |
| Clonality | Polyclonal |
| Product Type | Polyclonal Antibody |
| Immunogen Species | Saccharomyces cerevisiae (strain ATCC 204508 / S288c) (Baker's yeast) |
| Target Names | SUI2 Antibody |

Image



Western Blot

Positive WB detected in: recombinant protein

All lanes:SUI2 Antibody at 1:1000

Secondary

Goat polyclonal to rabbit IgG at 1/50000 dilution

Predicted band size: 37 kDa

Observed band size: 37 kDa

Usage

For Research Use Only. Not for use in diagnostic or therapeutic procedures.