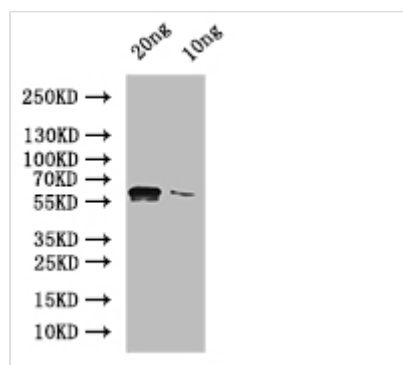




NUC1 Antibody

Product Code	CSB-PA362435XA01SVG
Storage	Upon receipt, store at -20°C or -80°C. Avoid repeated freeze.
Uniprot No.	P08466
Immunogen	Recombinant Saccharomyces cerevisiae (Baker's yeast) NUC1 protein (1-329aa)
Raised In	Rabbit
Species Reactivity	Saccharomyces cerevisiae (Baker's yeast)
Tested Applications	ELISA, WB; Recommended dilution: WB:1:500-1:5000
Form	Liquid
Conjugate	Non-conjugated
Storage Buffer	Preservative: 0.03% Proclin 300 Constituents: 50% Glycerol, 0.01M PBS, pH 7.4
Purification Method	>95%, Protein G purified
Isotype	IgG
Clonality	Polyclonal
Product Type	Polyclonal Antibody
Immunogen Species	Saccharomyces cerevisiae (strain ATCC 204508 / S288c) (Baker's yeast)
Target Names	NUC1

Image



Western Blot

Positive WB detected in: recombinant protein

All lanes: NUC1 Antibody at 1:1000

Secondary

Goat polyclonal to rabbit IgG at 1/50000 dilution

Predicted band size: 53 kDa

Observed band size: 56 kDa

Usage

For Research Use Only. Not for use in diagnostic or therapeutic procedures.