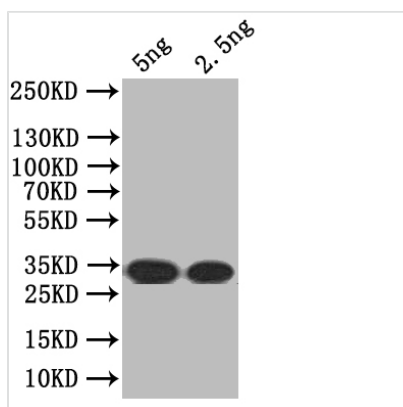




SEC16 Antibody

| | |
|----------------------------|--|
| Product Code | CSB-PA342557XA01SVG |
| Storage | Upon receipt, store at -20°C or -80°C. Avoid repeated freeze. |
| Uniprot No. | P48415 |
| Immunogen | Recombinant <i>Saccharomyces cerevisiae</i> (strain ATCC 204508 / S288c) (Baker's yeast) SEC16 protein (280-430aa) |
| Species Reactivity | <i>Saccharomyces cerevisiae</i> (strain ATCC 204508 / S288c) (Baker's yeast) |
| Tested Applications | ELISA, WB |
| Form | Liquid |
| Conjugate | Non-conjugated |
| Storage Buffer | Preservative: 0.03% Proclin 300 Constituents: 50% Glycerol, 0.01M PBS, pH 7.4 |
| Purification Method | Affinity-chromatography |
| Isotype | IgG |
| Clonality | Polyclonal |
| Product Type | Polyclonal Antibody |
| Immunogen Species | <i>Saccharomyces cerevisiae</i> (strain ATCC 204508 / S288c) (Baker's yeast) |
| Target Names | SEC16 |

Image



Western Blot

Positive WB detected in: recombinant protein

All lanes: SEC16 Antibody at 1:1000

Secondary

Goat polyclonal to rabbit IgG at 1/50000 dilution

Predicted band size: 34 kDa

Observed band size: 34 kDa

Usage

For Research Use Only. Not for use in diagnostic or therapeutic procedures.