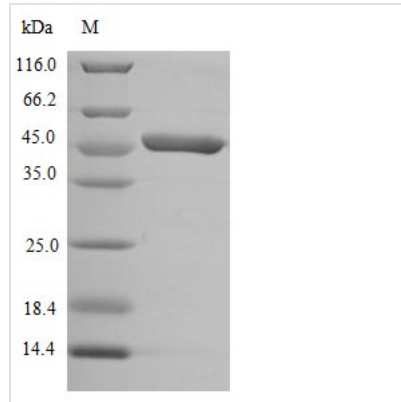


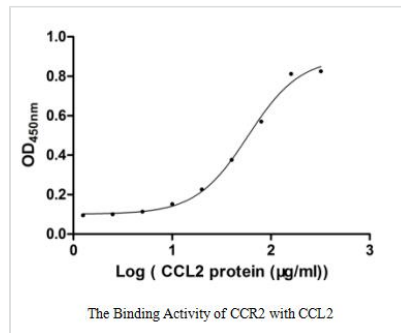


Recombinant Human C-C chemokine receptor type 2 (CCR2) (Active)

Product Code	CSB-CF004841HU
Relevance	Receptor for the CCL2, CCL7 and CCL13 chemokines. Receptor for the beta-defensin DEFB106A/DEFB106B. Transduces a signal by increasing intracellular calcium ion levels. Upon CCL2 ligation, mediates chemotaxis and migration induction through the activation of the PI3K cascade, the small G protein Rac and lamellipodium protrusion (Probable).
Storage	The shelf life is related to many factors, storage state, buffer ingredients, storage temperature and the stability of the protein itself. Generally, the shelf life of liquid form is 6 months at -20°C/-80°C. The shelf life of lyophilized form is 12 months at -20°C/-80°C.
Uniprot No.	P41597
Storage Buffer	Tris-based buffer,50% glycerol
Product Type	Others
Immunogen Species	Homo sapiens (Human)
Biological Activity	Measured by its binding ability in a functional ELISA. Immobilized CCR2 at 1 µg/ml can bind human CCL2, the EC50 of human CCL2 protein is 41.51-83.15 µg/ml.
Purity	Greater than 85% as determined by SDS-PAGE.
Sequence	MLSTSRSRFIRNTNESGEEVTTFFDYYDYGAPCHKFDVKQIGAQLLPPLYSLVFI FGFVGNMLVVLILINCKKCLKLTDIYLLNLAISDLLFLITLPLWAHSAANEWVFGN AMCKLFTGLYHIGYFGGIFFIILLTIDRYLAIVHAVFALKARTVTFGVVTSVITWLV AVFASVPGIIFTKCQKEDSVYVCGPYFPRGWNNFHTIMRNILGLVLP LLIMVICY SGILKTL LRCRNEKKRHRAVRVIFTIMIVYFLFWTPYNIVILLNTFQEFFGLSNCE STSQLDQATQVTETLGMTHCCINPIYAFVGEKFRSLFHIALGCRIAPLQKPVCG GPGVRPGKNVKVTTQGLLDGRGKGKSGRAPEASLQDKEGA
Research Area	Cancer
Source	in vitro E.coli expression system
Target Names	CCR2
Expression Region	1-374aa
Notes	Repeated freezing and thawing is not recommended. Store working aliquots at 4°C for up to one week.
Tag Info	Tag type will be determined during the manufacturing process.
Mol. Weight	45.4 kDa
Protein Length	Full Length
Image	



(Tris-Glycine gel) Discontinuous SDS-PAGE (reduced) with 5% enrichment gel and 15% separation gel.



Shelf Life

The shelf life is related to many factors, storage state, buffer ingredients, storage temperature and the stability of the protein itself.

Generally, the shelf life of liquid form is 6 months at -20°C/-80°C. The shelf life of lyophilized form is 12 months at -20°C/-80°C.