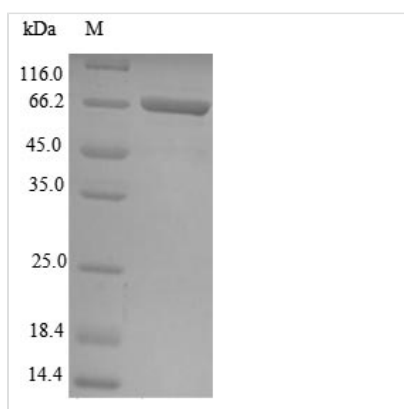
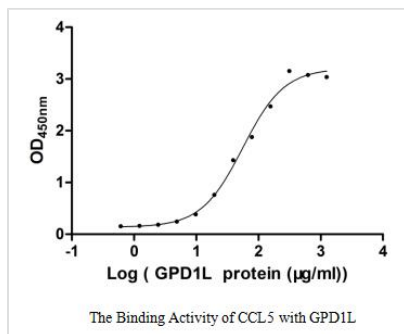




Recombinant Human Glycerol-3-phosphate dehydrogenase 1-like protein (GPD1L) (Active)

Product Code	CSB-EP854029HU
Relevance	Plays a role in regulating cardiac sodium current; decreased enzymatic activity with resulting increased levels of glycerol 3-phosphate activating the DPD1L-dependent SCN5A phosphorylation pathway, may ultimately lead to decreased sodium current; cardiac sodium current may also be reduced due to alterations of NAD(H) balance induced by DPD1L.
Abbreviation	Recombinant Human GPD1L protein (Active)
Storage	The shelf life is related to many factors, storage state, buffer ingredients, storage temperature and the stability of the protein itself. Generally, the shelf life of liquid form is 6 months at -20°C/-80°C. The shelf life of lyophilized form is 12 months at -20°C/-80°C.
Uniprot No.	Q8N335
Product Type	Other
Immunogen Species	Homo sapiens (Human)
Biological Activity	Measured by its binding ability in a functional ELISA. Immobilized CCL5 at 2 µg/ml can bind human GPD1L, the EC50 of human GPD1L protein is 47.34-66.33 µg/ml.
Purity	Greater than 85% as determined by SDS-PAGE.
Sequence	MAAAPLKVCIVGSGNWGS AVAKIIGNNVK LQKFASTVKMWVFEETVNGRKLTDIINDHENVKYLPGHKL PENVVAMSNLSEAVQDADLLVFVIPHQFIHRICDEITGRVPKKALGITLIK GIDEGPEGLKLISDIIREKMGIDISVLMGANIANEVAAEKFCETTIGSKVMENGLL FKELLQTPNFRITVVD DADTVELCGALKNIVAVGAGFC DGLRCGDNTKAAVIRLGLMEMIAFARIFCKGQVSTATFLESCGVADLITTCYGGRRNRVAEAFARTGKTIEELEKEMLN GQKLGQPQTS AEVYRILKQKGLLDKFPLFTAVYQICYESRPVQEMLSCLQSHPEHT
Research Area	Cell Biology
Source	E.coli
Target Names	GPD1L
Expression Region	1-351aa
Notes	Repeated freezing and thawing is not recommended. Store working aliquots at 4°C for up to one week.
Tag Info	N-terminal GST-tagged
Mol. Weight	65.4 kDa
Protein Length	Full Length
Image	



(Tris-Glycine gel) Discontinuous SDS-PAGE (reduced) with 5% enrichment gel and 15% separation gel.

Reconstitution

We recommend that this vial be briefly centrifuged prior to opening to bring the contents to the bottom. Please reconstitute protein in deionized sterile water to a concentration of 0.1-1.0 mg/mL. We recommend to add 5-50% of glycerol (final concentration) and aliquot for long-term storage at -20°C/-80°C. Our default final concentration of glycerol is 50%. Customers could use it as reference.

Shelf Life

The shelf life is related to many factors, storage state, buffer ingredients, storage temperature and the stability of the protein itself. Generally, the shelf life of liquid form is 6 months at -20°C/-80°C. The shelf life of lyophilized form is 12 months at -20°C/-80°C.