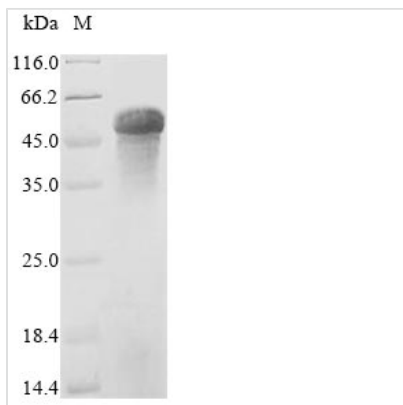


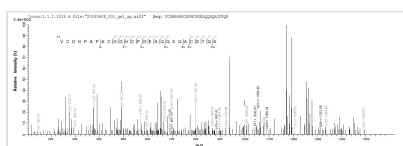


# Recombinant Mouse Properdin (Cfp)

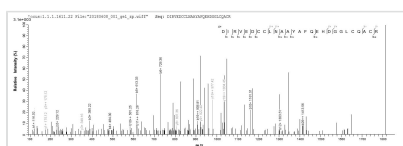
<b>Product Code</b>	CSB-YP005291MOf3
<b>Relevance</b>	A positive regulator of the alternate pathway of complement. It binds to and stabilizes the C3- and C5-convertase enzyme complexes.
<b>Abbreviation</b>	Recombinant Mouse Cfp protein
<b>Storage</b>	The shelf life is related to many factors, storage state, buffer ingredients, storage temperature and the stability of the protein itself. Generally, the shelf life of liquid form is 6 months at -20°C/-80°C. The shelf life of lyophilized form is 12 months at -20°C/-80°C.
<b>Uniprot No.</b>	P11680
<b>Product Type</b>	Recombinant Protein
<b>Immunogen Species</b>	Mus musculus (Mouse)
<b>Purity</b>	≥ 85% as determined by SDS-PAGE.
<b>Sequence</b>	SDPVLCFYQYEESSGRCKGLLGRDIRVEDCCLNAAAYAFQEHDGGLCQACRSP QWSAWSLWGPCSVTCSEGSQRLRHRRCVGRGGQCSENVAPGTLEWQLQAC EDQPCCPEMGGWSEWGPWGPCSVTCSKGTQIRQRVCDNPAPKCGGHCPG EAQQSQACDTQKTCPTHGAWASWGPWSPCSGSLGGAQEPKETRSRSCSA PAPSHQPPGKPCSGPAYEHKACSGLPVAGGWGPWSPLSPCSVTCGLG QTLEQRTCDHPAPRHGGPFCAGDATRNQMCNKAVPCPVNGEWEAWGKWS DCSRLRMSINCEGTPGQQSRSRSCGGRKFNGKPCAGKLQDIRHCYNIHNCIM KGSWSQWSTWSLCTPPCSPNATRVRLCTPLLPKYPPTVSMVEGQGEKNV TFWGTPRPLCEALQGQKLVVEEKRSCLHVPVCKDPEEKK
<b>Research Area</b>	Immunology
<b>Source</b>	Yeast
<b>Target Names</b>	Cfp
<b>Protein Names</b>	Complement factor P
<b>Expression Region</b>	23-464aa
<b>Notes</b>	Repeated freezing and thawing is not recommended. Store working aliquots at 4°C for up to one week.
<b>Tag Info</b>	C-terminal Myc-tagged and C-terminal 6xHis-tagged
<b>Mol. Weight</b>	50.9 kDa
<b>Protein Length</b>	Full Length of Mature Protein
<b>Image</b>	



(Tris-Glycine gel) Discontinuous SDS-PAGE (reduced) with 5% enrichment gel and 15% separation gel.



Based on the SEQUEST from database of Yeast host and target protein, the LC-MS/MS Analysis result of CSB-YP005291MOf3 could indicate that this peptide derived from Yeast-expressed Mus musculus (Mouse) Cfp.



Based on the SEQUEST from database of Yeast host and target protein, the LC-MS/MS Analysis result of CSB-YP005291MOf3 could indicate that this peptide derived from Yeast-expressed Mus musculus (Mouse) Cfp.

**Reconstitution**

We recommend that this vial be briefly centrifuged prior to opening to bring the contents to the bottom. Please reconstitute protein in deionized sterile water to a concentration of 0.1-1.0 mg/mL. We recommend to add 5-50% of glycerol (final concentration) and aliquot for long-term storage at -20°C/-80°C. Our default final concentration of glycerol is 50%. Customers could use it as reference.

**Shelf Life**

The shelf life is related to many factors, storage state, buffer ingredients, storage temperature and the stability of the protein itself. Generally, the shelf life of liquid form is 6 months at -20°C/-80°C. The shelf life of lyophilized form is 12 months at -20°C/-80°C.