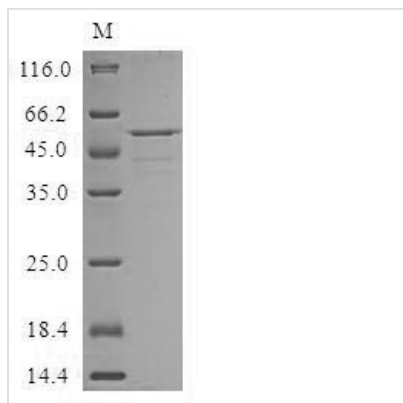




Recombinant Human Cysteine-rich secretory protein LCCL domain-containing 2 (CRISPLD2)

Product Code	CSB-BP884430HUb1
Relevance	Promotes matrix assembly.
Abbreviation	Recombinant Human CRISPLD2 protein
Storage	The shelf life is related to many factors, storage state, buffer ingredients, storage temperature and the stability of the protein itself. Generally, the shelf life of liquid form is 6 months at -20°C/-80°C. The shelf life of lyophilized form is 12 months at -20°C/-80°C.
Uniprot No.	Q9H0B8
Product Type	Recombinant Protein
Immunogen Species	Homo sapiens (Human)
Purity	≥ 85% as determined by SDS-PAGE.
Sequence	YLLPNVTLLLEELLSKYQHNEHSRVRRAIPREDKEEILMLHNKLRGQVQPQAS NMEYMTWDDLEKSAAAWASQCIWEHGPTSLLVLSIGQNLGAHWGRYRSPGF HVQSWYDEVKDYTYPPYSECNPWCPCRCGPMCTHYTQIVWATTNKIGCAV NTRKMTVWGEVWENAVYFVCNYSKGNWIGEAPYKNGRPCSECPPSYGG SCRNNLCYREETYTPKPEDEMNEVETAPIPEENHVWLQPRVMRPTKPKKTS AVNYMTQVVRCDTKMKDRCKGSTCNRYQCPAGCLNHKAKIFGTLFYESSSSI CRAAIHYGILDDKGGLVDITRNGKVPFFVKSERHGVQSLSKYPSSSFMVSKV KVQDLDCYTTVAQLCPFEPATHCPRIHCPAHCKDEPSYWAPVFGTNIYADTS SICKTAVHAGVISNESGGDVDVMPVDKCKTYVGLRNGVQSESLGTPRDGKA FRIFAVRQ
Research Area	Signal Transduction
Source	Baculovirus
Target Names	CRISPLD2
Protein Names	Cysteine-rich secretory protein 11 Short name: CRISP-11 LCCL domain-containing cysteine-rich secretory protein 2 CRISP11, LCRISP2
Expression Region	23-497aa
Notes	Repeated freezing and thawing is not recommended. Store working aliquots at 4°C for up to one week.
Tag Info	N-terminal 10xHis-tagged and C-terminal Myc-tagged
Mol. Weight	57.8 kDa
Protein Length	Full Length of Mature Protein
Image	



(Tris-Glycine gel) Discontinuous SDS-PAGE (reduced) with 5% enrichment gel and 15% separation gel.

Reconstitution

We recommend that this vial be briefly centrifuged prior to opening to bring the contents to the bottom. Please reconstitute protein in deionized sterile water to a concentration of 0.1-1.0 mg/mL. We recommend to add 5-50% of glycerol (final concentration) and aliquot for long-term storage at -20°C/-80°C. Our default final concentration of glycerol is 50%. Customers could use it as reference.

Shelf Life

The shelf life is related to many factors, storage state, buffer ingredients, storage temperature and the stability of the protein itself. Generally, the shelf life of liquid form is 6 months at -20°C/-80°C. The shelf life of lyophilized form is 12 months at -20°C/-80°C.