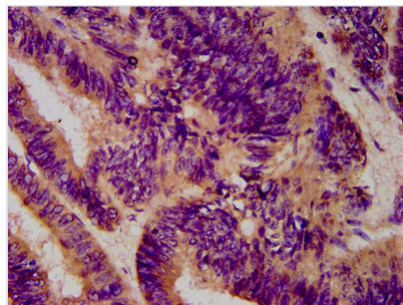




CTAGE5 Antibody

Product Code	CSB-PA006131LA01HU
Storage	Upon receipt, store at -20°C or -80°C. Avoid repeated freeze.
Uniprot No.	O15320
Immunogen	Recombinant Human Endoplasmic reticulum export factor CTAGE5 protein (515-632AA)
Raised In	Rabbit
Species Reactivity	Human
Tested Applications	ELISA, IHC; Recommended dilution: IHC:1:500-1:1000
Form	Liquid
Conjugate	Non-conjugated
Storage Buffer	Preservative: 0.03% Proclin 300 Constituents: 50% Glycerol, 0.01M PBS, pH 7.4
Purification Method	>95%, Protein G purified
Isotype	IgG
Clonality	Polyclonal
Alias	Endoplasmic reticulum export factor CTAGE5 (CTAGE family member 5 ER export factor) (Protein cTAGE-5) (Meningioma-expressed antigen 6/11), CTAGE5, MEA11 MEA6 MGEA11 MGEA6
Immunogen Species	Homo sapiens (Human)
Research Area	Cancer
Target Names	CTAGE5

Image



IHC image of CSB-PA006131LA01HU diluted at 1:600 and staining in paraffin-embedded human colon cancer performed on a Leica BondTM system. After dewaxing and hydration, antigen retrieval was mediated by high pressure in a citrate buffer (pH 6.0). Section was blocked with 10% normal goat serum 30min at RT. Then primary antibody (1% BSA) was incubated at 4°C overnight. The primary is detected by a biotinylated secondary antibody and visualized using an HRP conjugated SP system.

Usage

For Research Use Only. Not for use in diagnostic or therapeutic procedures.