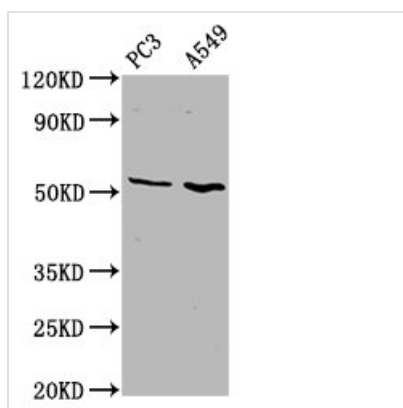




ETV5 Antibody

Product Code	CSB-PA007859LA01HU
Storage	Upon receipt, store at -20°C or -80°C. Avoid repeated freeze.
Uniprot No.	P41161
Immunogen	Recombinant Human ETS translocation variant 5 protein (124-265AA)
Raised In	Rabbit
Species Reactivity	Human
Tested Applications	ELISA, WB, IHC; Recommended dilution: WB:1:500-1:5000, IHC:1:500-1:1000
Form	Liquid
Conjugate	Non-conjugated
Storage Buffer	Preservative: 0.03% Proclin 300 Constituents: 50% Glycerol, 0.01M PBS, pH 7.4
Purification Method	>95%, Protein G purified
Isotype	IgG
Clonality	Polyclonal
Alias	ETS translocation variant 5 (Ets-related protein ERM), ETV5, ERM
Immunogen Species	Homo sapiens (Human)
Research Area	Epigenetics and Nuclear Signaling
Target Names	ETV5

Image



Western Blot

Positive WB detected in: PC-3 whole cell lysate, A549 whole cell lysate

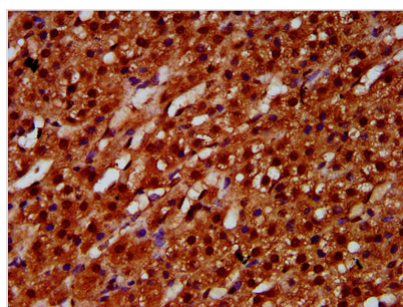
All lanes: ETV5 antibody at 4.6µg/ml

Secondary

Goat polyclonal to rabbit IgG at 1/50000 dilution

Predicted band size: 58, 63 kDa

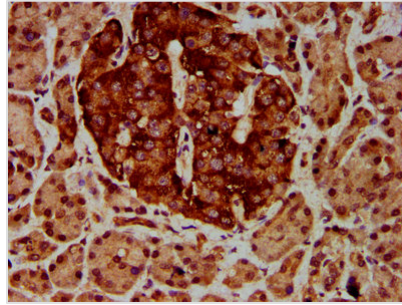
Observed band size: 58 kDa



IHC image of CSB-PA007859LA01HU diluted at 1:600 and staining in paraffin-embedded human adrenal gland tissue performed on a Leica Bond™ system. After dewaxing and hydration, antigen retrieval was mediated by high pressure in a citrate buffer (pH 6.0). Section was blocked with 10% normal goat serum 30min at RT. Then primary antibody (1% BSA) was incubated at 4°C overnight. The primary is detected by a



biotinylated secondary antibody and visualized using an HRP conjugated SP system.



IHC image of CSB-PA007859LA01HU diluted at 1:600 and staining in paraffin-embedded human pancreatic tissue performed on a Leica Bond™ system. After dewaxing and hydration, antigen retrieval was mediated by high pressure in a citrate buffer (pH 6.0). Section was blocked with 10% normal goat serum 30min at RT. Then primary antibody (1% BSA) was incubated at 4°C overnight. The primary is detected by a biotinylated secondary antibody and visualized using an HRP conjugated SP system.