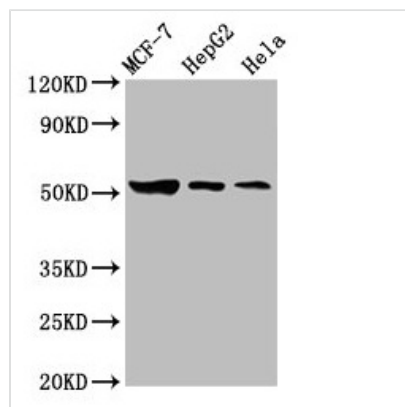




GBA Antibody

Product Code	CSB-PA009289LA01HU
Storage	Upon receipt, store at -20°C or -80°C. Avoid repeated freeze.
Uniprot No.	P04062
Immunogen	Recombinant Human Glucosylceramidase protein (215-343AA)
Raised In	Rabbit
Species Reactivity	Human
Tested Applications	ELISA, WB, IHC; Recommended dilution: WB:1:500-1:5000, IHC:1:500-1:1000
Form	Liquid
Conjugate	Non-conjugated
Storage Buffer	Preservative: 0.03% Proclin 300 Constituents: 50% Glycerol, 0.01M PBS, pH 7.4
Purification Method	>95%, Protein G purified
Isotype	IgG
Clonality	Polyclonal
Alias	Glucosylceramidase (EC 3.2.1.45) (Acid beta-glucosidase) (Alglucerase) (Beta-glucocerebrosidase) (Beta-GC) (D-glucosyl-N-acylsphingosine glucohydrolase) (Imiglucerase), GBA, GC GLUC
Immunogen Species	Homo sapiens (Human)
Research Area	Neuroscience
Target Names	GBA

Image



Western Blot

Positive WB detected in: MCF-7 whole cell lysate, HepG2 whole cell lysate, HeLa whole cell lysate

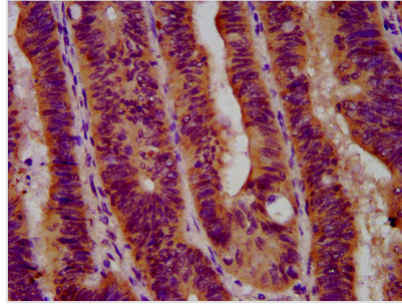
All lanes: GBA antibody at 3.6µg/ml

Secondary

Goat polyclonal to rabbit IgG at 1/50000 dilution

Predicted band size: 60, 58, 30, 51, 55 kDa

Observed band size: 51 kDa



IHC image of CSB-PA009289LA01HU diluted at 1:600 and staining in paraffin-embedded human colon cancer performed on a Leica Bond™ system. After dewaxing and hydration, antigen retrieval was mediated by high pressure in a citrate buffer (pH 6.0). Section was blocked with 10% normal goat serum 30min at RT. Then primary antibody (1% BSA) was incubated at 4°C overnight. The primary is detected by a biotinylated secondary antibody and visualized using an HRP conjugated SP system.

Usage

For Research Use Only. Not for use in diagnostic or therapeutic procedures.