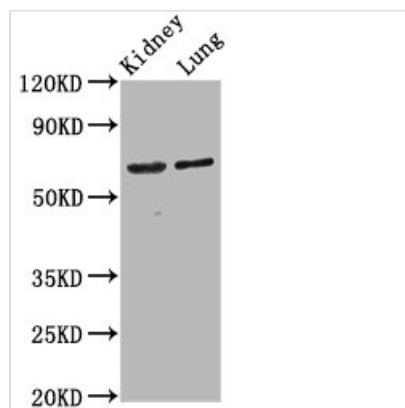




SRRM4 Antibody

Product Code	CSB-PA012292LA01HU
Storage	Upon receipt, store at -20°C or -80°C. Avoid repeated freeze.
Uniprot No.	A7MD48
Immunogen	Recombinant Human Serine/arginine repetitive matrix protein 4 protein (400-479AA)
Raised In	Rabbit
Species Reactivity	Human, Mouse, Rat
Tested Applications	ELISA, WB, IHC; Recommended dilution: WB:1:500-1:5000, IHC:1:500-1:1000
Form	Liquid
Conjugate	Non-conjugated
Storage Buffer	Preservative: 0.03% Proclin 300 Constituents: 50% Glycerol, 0.01M PBS, pH 7.4
Purification Method	>95%, Protein G purified
Isotype	IgG
Clonality	Polyclonal
Alias	Serine/arginine repetitive matrix protein 4 (Medulloblastoma antigen MU-MB-2.76) (Neural-specific serine/arginine repetitive splicing factor of 100 kDa) (Neural-specific SR-related protein of 100 kDa) (nSR100), SRRM4, KIAA1853
Immunogen Species	Homo sapiens (Human)
Research Area	Epigenetics and Nuclear Signaling
Target Names	SRRM4

Image



Western Blot

Positive WB detected in: Rat kidney tissue,
Mouse lung tissue

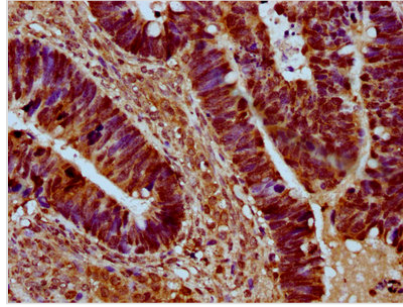
All lanes: SRRM4 antibody at 4.2µg/ml

Secondary

Goat polyclonal to rabbit IgG at 1/50000 dilution

Predicted band size: 69 kDa

Observed band size: 69 kDa



IHC image of CSB-PA012292LA01HU diluted at 1:500 and staining in paraffin-embedded human ovarian cancer performed on a Leica Bond™ system. After dewaxing and hydration, antigen retrieval was mediated by high pressure in a citrate buffer (pH 6.0). Section was blocked with 10% normal goat serum 30min at RT. Then primary antibody (1% BSA) was incubated at 4°C overnight. The primary is detected by a biotinylated secondary antibody and visualized using an HRP conjugated SP system.

Usage

For Research Use Only. Not for use in diagnostic or therapeutic procedures.