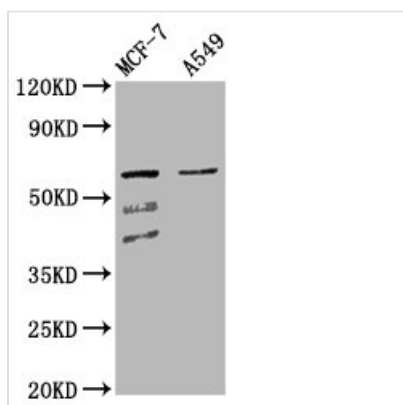




# SLC22A5 Antibody

<b>Product Code</b>	CSB-PA021460LA01HU
<b>Storage</b>	Upon receipt, store at -20°C or -80°C. Avoid repeated freeze.
<b>Uniprot No.</b>	O76082
<b>Immunogen</b>	Recombinant Human Solute carrier family 22 member 5 protein (42-142AA)
<b>Raised In</b>	Rabbit
<b>Species Reactivity</b>	Human
<b>Tested Applications</b>	ELISA, WB, IF; Recommended dilution: WB:1:500-1:5000, IF:1:20-1:200
<b>Form</b>	Liquid
<b>Conjugate</b>	Non-conjugated
<b>Storage Buffer</b>	Preservative: 0.03% Proclin 300 Constituents: 50% Glycerol, 0.01M PBS, pH 7.4
<b>Purification Method</b>	>95%, Protein G purified
<b>Isotype</b>	IgG
<b>Clonality</b>	Polyclonal
<b>Alias</b>	Solute carrier family 22 member 5 (High-affinity sodium-dependent carnitine cotransporter) (Organic cation/carnitine transporter 2), SLC22A5, OCTN2
<b>Immunogen Species</b>	Homo sapiens (Human)
<b>Research Area</b>	Signal Transduction
<b>Target Names</b>	SLC22A5

## Image



### Western Blot

Positive WB detected in: MCF-7 whole cell lysate, A549 whole cell lysate

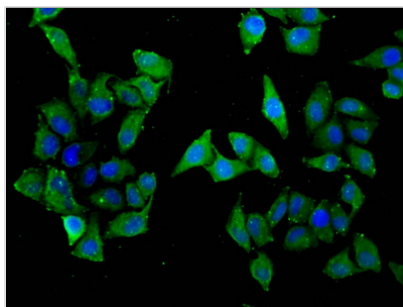
All lanes: SLC22A5 antibody at 4.3µg/ml

Secondary

Goat polyclonal to rabbit IgG at 1/50000 dilution

Predicted band size: 63, 25, 66 kDa

Observed band size: 63 kDa



Immunofluorescence staining of HeLa cells with CSB-PA021460LA01HU at 1:33, counter-stained with DAPI. The cells were fixed in 4% formaldehyde, permeabilized using 0.2% Triton X-100 and blocked in 10% normal Goat Serum. The cells were then incubated with the antibody overnight at 4°C. The secondary antibody was Alexa Fluor 488-conjugated AffiniPure Goat Anti-Rabbit IgG(H+L).

## Usage

For Research Use Only. Not for use in diagnostic or therapeutic procedures.