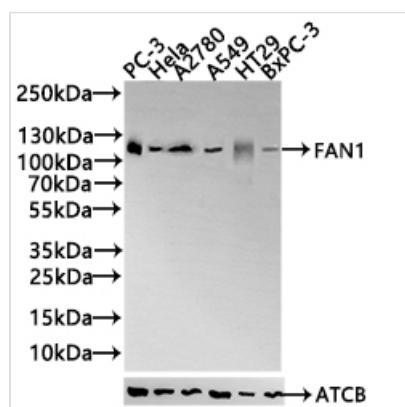




FAN1 Antibody

Product Code	CSB-PA22859A0Rb
Storage	Upon receipt, store at -20°C or -80°C. Avoid repeated freeze.
Uniprot No.	Q9Y2M0
Immunogen	Synthesized peptide derived from human FAN1
Raised In	Rabbit
Species Reactivity	Human
Tested Applications	ELISA, WB; Recommended dilution: WB:1:500-1:2000
Form	Liquid
Storage Buffer	Liquid in PBS containing 50% glycerol, 0.5% BSA and 0.02% sodium azide.
Purification Method	Antigen affinity purification
Isotype	IgG
Clonality	Polyclonal
Product Type	Polyclonal Antibody
Immunogen Species	Homo sapiens (Human)
Research Area	Epigenetics and Nuclear Signaling
Target Names	FAN1

Image



Western Blot

Positive WB detected in: PC-3 whole cell lysate(30µg),Hela whole cell lysate(30µg), A2780 whole cell lysate(30µg), A549 whole cell lysate(30µg), HT29 whole cell lysate(30µg), BxPC-3 whole cell lysate(30µg)
 All lanes: FFAR3 antibody at 1:1000
 Secondary
 Goat polyclonal to rabbit IgG at 1/40000 dilution
 Predicted band size: 115,60 kDa
 Observed band size: 115kDa
 Exposure time: 120s

Usage

For Research Use Only. Not for use in diagnostic or therapeutic procedures.