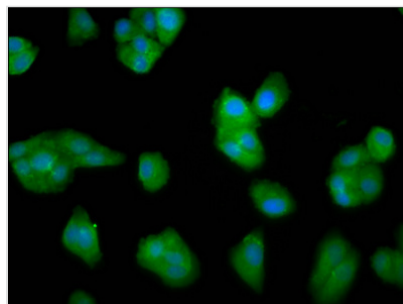




LCE3C Antibody

Product Code	CSB-PA725885LA01HU
Storage	Upon receipt, store at -20°C or -80°C. Avoid repeated freeze.
Uniprot No.	Q5T5A8
Immunogen	Recombinant Human Late cornified envelope protein 3C protein (1-94AA)
Raised In	Rabbit
Species Reactivity	Human
Tested Applications	ELISA, IF; Recommended dilution: IF:1:20-1:200
Form	Liquid
Conjugate	Non-conjugated
Storage Buffer	Preservative: 0.03% Proclin 300 Constituents: 50% Glycerol, 0.01M PBS, pH 7.4
Purification Method	>95%, Protein G purified
Isotype	IgG
Clonality	Polyclonal
Alias	Late cornified envelope protein 3C (Late envelope protein 15) (Small proline-rich-like epidermal differentiation complex protein 3A), LCE3C, LEP15 SPRL3A
Immunogen Species	Homo sapiens (Human)
Research Area	Cell Biology
Target Names	LCE3C

Image



Immunofluorescence staining of HepG2 cells with CSB-PA725885LA01HU at 1:33, counter-stained with DAPI. The cells were fixed in 4% formaldehyde, permeabilized using 0.2% Triton X-100 and blocked in 10% normal Goat Serum. The cells were then incubated with the antibody overnight at 4°C. The secondary antibody was Alexa Fluor 488-conjugated AffiniPure Goat Anti-Rabbit IgG(H+L).

Usage

For Research Use Only. Not for use in diagnostic or therapeutic procedures.