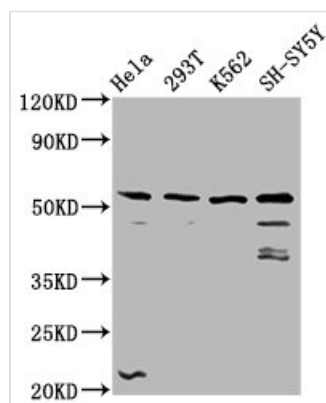




# RUFY3 Antibody

<b>Product Code</b>	CSB-PA765974LA01HU
<b>Storage</b>	Upon receipt, store at -20°C or -80°C. Avoid repeated freeze.
<b>Uniprot No.</b>	Q7L099
<b>Immunogen</b>	Recombinant Human Protein RUFY3 protein (243-352AA)
<b>Raised In</b>	Rabbit
<b>Species Reactivity</b>	Human
<b>Tested Applications</b>	ELISA, WB, IF; Recommended dilution: WB:1:500-1:5000, IF:1:50-1:200
<b>Form</b>	Liquid
<b>Conjugate</b>	Non-conjugated
<b>Storage Buffer</b>	Preservative: 0.03% Proclin 300 Constituents: 50% Glycerol, 0.01M PBS, pH 7.4
<b>Purification Method</b>	>95%, Protein G purified
<b>Isotype</b>	IgG
<b>Clonality</b>	Polyclonal
<b>Alias</b>	Protein RUFY3 (RUN and FYVE domain-containing protein 3) (Rap2-interacting protein x) (RIPx) (Single axon-regulated protein) (Singar), RUFY3, KIAA0871
<b>Immunogen Species</b>	Homo sapiens (Human)
<b>Research Area</b>	Signal Transduction
<b>Target Names</b>	RUFY3

## Image



### Western Blot

Positive WB detected in: HeLa whole cell lysate, 293T whole cell lysate, K562 whole cell lysate, SH-SY5Y whole cell lysate

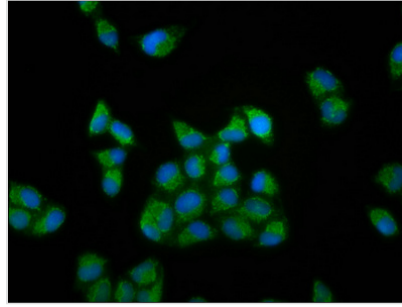
All lanes: RUFY3 antibody at 3.71µg/ml

Secondary

Goat polyclonal to rabbit IgG at 1/50000 dilution

Predicted band size: 53, 56, 71, 65 kDa

Observed band size: 53 kDa



Immunofluorescence staining of HeLa cells with CSB-PA765974LA01HU at 1:133, counter-stained with DAPI. The cells were fixed in 4% formaldehyde, permeabilized using 0.2% Triton X-100 and blocked in 10% normal Goat Serum. The cells were then incubated with the antibody overnight at 4°C. The secondary antibody was Alexa Fluor 488-conjugated AffiniPure Goat Anti-Rabbit IgG(H+L).

---

**Usage**

For Research Use Only. Not for use in diagnostic or therapeutic procedures.