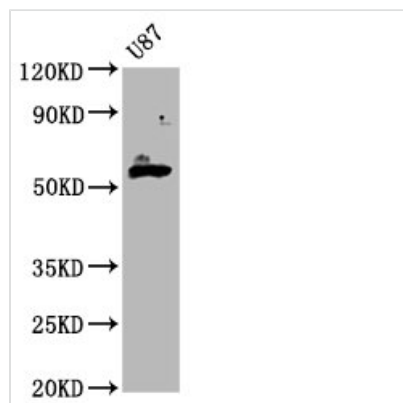




GPT2 Antibody

Product Code	CSB-PA823460LA01HU
Storage	Upon receipt, store at -20°C or -80°C. Avoid repeated freeze.
Uniprot No.	Q8TD30
Immunogen	Recombinant Human Alanine aminotransferase 2 protein (95-208AA)
Raised In	Rabbit
Species Reactivity	Human
Tested Applications	ELISA, WB, IHC; Recommended dilution: WB:1:500-1:5000, IHC:1:500-1:1000
Form	Liquid
Conjugate	Non-conjugated
Storage Buffer	Preservative: 0.03% Proclin 300 Constituents: 50% Glycerol, 0.01M PBS, pH 7.4
Purification Method	>95%, Protein G purified
Isotype	IgG
Clonality	Polyclonal
Alias	Alanine aminotransferase 2 (ALT2) (EC 2.6.1.2) (Glutamate pyruvate transaminase 2) (GPT 2) (Glutamic--alanine transaminase 2) (Glutamic--pyruvic transaminase 2), GPT2, AAT2 ALT2
Immunogen Species	Homo sapiens (Human)
Research Area	Signal Transduction
Target Names	GPT2

Image



Western Blot

Positive WB detected in: U87 whole cell lysate

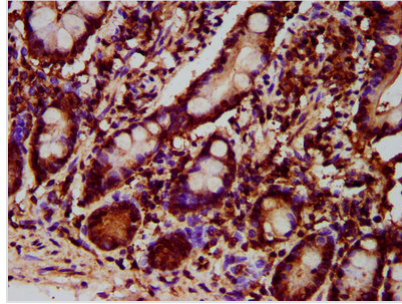
All lanes: GPT2 antibody at 4.5µg/ml

Secondary

Goat polyclonal to rabbit IgG at 1/50000 dilution

Predicted band size: 58, 47 kDa

Observed band size: 58 kDa



IHC image of CSB-PA823460LA01HU diluted at 1:700 and staining in paraffin-embedded human small intestine tissue performed on a Leica BondTM system. After dewaxing and hydration, antigen retrieval was mediated by high pressure in a citrate buffer (pH 6.0). Section was blocked with 10% normal goat serum 30min at RT. Then primary antibody (1% BSA) was incubated at 4°C overnight. The primary is detected by a biotinylated secondary antibody and visualized using an HRP conjugated SP system.