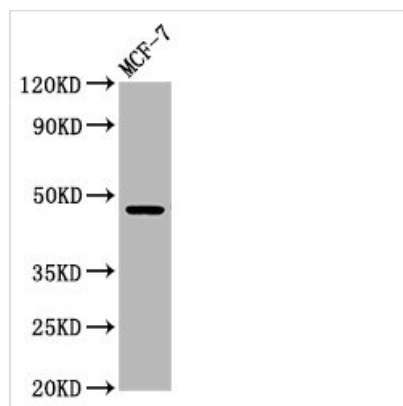




WDFY2 Antibody

Product Code	CSB-PA850405LA01HU
Storage	Upon receipt, store at -20°C or -80°C. Avoid repeated freeze.
Uniprot No.	Q96P53
Immunogen	Recombinant Human WD repeat and FYVE domain-containing protein 2 protein (2-114AA)
Raised In	Rabbit
Species Reactivity	Human
Tested Applications	ELISA, WB, IF; Recommended dilution: WB:1:500-1:5000, IF:1:50-1:200
Form	Liquid
Conjugate	Non-conjugated
Storage Buffer	Preservative: 0.03% Proclin 300 Constituents: 50% Glycerol, 0.01M PBS, pH 7.4
Purification Method	>95%, Protein G purified
Isotype	IgG
Clonality	Polyclonal
Alias	WD repeat and FYVE domain-containing protein 2 (Propeller-FYVE protein) (Prof) (WD40- and FYVE domain-containing protein 2) (Zinc finger FYVE domain-containing protein 22), WDFY2, WDF2 ZFYVE22
Immunogen Species	Homo sapiens (Human)
Research Area	Signal Transduction
Target Names	WDFY2

Image



Western Blot

Positive WB detected in: MCF-7 whole cell lysate

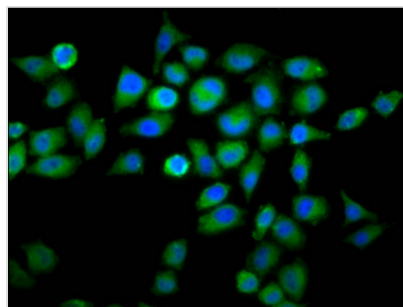
All lanes: WDFY2 antibody at 5.6µg/ml

Secondary

Goat polyclonal to rabbit IgG at 1/50000 dilution

Predicted band size: 46 kDa

Observed band size: 46 kDa



Immunofluorescence staining of Hela cells with CSB-PA850405LA01HU at 1:66, counter-stained with DAPI. The cells were fixed in 4% formaldehyde, permeabilized using 0.2% Triton X-100 and blocked in 10% normal Goat Serum. The cells were then incubated with the antibody overnight at 4°C. The secondary antibody was Alexa Fluor 488-conjugated AffiniPure Goat Anti-Rabbit IgG(H+L).

Usage

For Research Use Only. Not for use in diagnostic or therapeutic procedures.