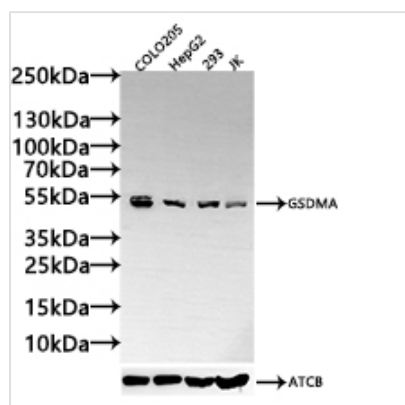




GSDMA Antibody

Product Code	CSB-PA850415LA01HU
Storage	Upon receipt, store at -20°C or -80°C. Avoid repeated freeze.
Uniprot No.	Q96QA5
Immunogen	Fusion protein of human GSDMA
Raised In	Rabbit
Species Reactivity	Human
Tested Applications	ELISA, WB, IF; Recommended dilution: WB:1:1000-1:3000 , IF:1:20-1:100
Form	Liquid
Storage Buffer	Preservative: 0.05% NaN3 Constituents: PBS containing 40% glycerol, pH7.4
Purification Method	Antigen affinity purification
Isotype	IgG
Clonality	Polyclonal
Product Type	Polyclonal Antibody
Immunogen Species	Homo sapiens (Human)
Research Area	Cell Biology
Target Names	GSDMA

Image



Western Blot

Positive WB detected in: COLO205 whole cell lysate(30µg), HepG2 whole cell lysate(30µg), 293 whole cell lysate(30µg), JK whole cell lysate(30µg)

All lanes: GSDMA antibody at 1:1000

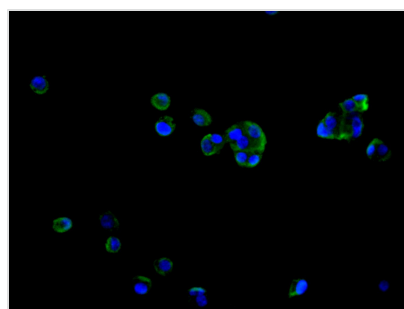
Secondary

Goat polyclonal to rabbit IgG at 1/20000 dilution

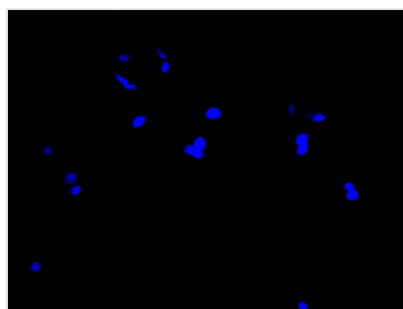
Predicted band size: 50 kDa

Observed band size: 50 kDa

Exposure time: 60s



Immunofluorescence staining of HepG2 cell with CSB-PA850415LA01HU at 1:30, counter-stained with DAPI. The cells were fixed in 4% formaldehyde and permeated by 0.2% TritonX-100 for 15 min. Then 10% normal goat serum to block non-specific protein-protein interactions. The cells were then incubated with the antibody overnight at 4°. The secondary antibody was Alexa Fluor 488-conjugated AffiniPure Goat Anti-Rabbit IgG(H+L).



Immunofluorescence staining of HepG2 cell with 5% goat serum, counter-stained with DAPI. The cells were fixed in 4% formaldehyde and blocked in 10% normal Goat Serum. The cells were then incubated with the antibody overnight at 4C. The secondary antibody was Alexa Fluor 488-conjugated AffiniPure Goat Anti-Rabbit IgG(H+L).

Usage

For Research Use Only. Not for use in diagnostic or therapeutic procedures.