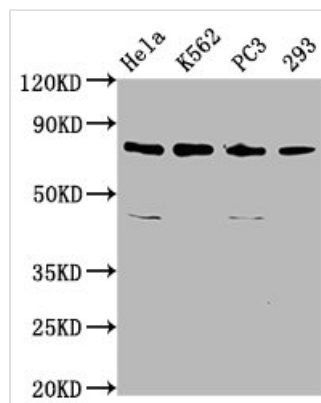




INTS13 Antibody

Product Code	CSB-PA868331LA01HU
Storage	Upon receipt, store at -20°C or -80°C. Avoid repeated freeze.
Uniprot No.	Q9NVM9
Immunogen	Recombinant Human Integrator complex subunit 13 protein (573-706AA)
Raised In	Rabbit
Species Reactivity	Human
Tested Applications	ELISA, WB, IP; Recommended dilution: WB:1:500-1:5000, IP:1:200-1:2000
Form	Liquid
Conjugate	Non-conjugated
Storage Buffer	Preservative: 0.03% Proclin 300 Constituents: 50% Glycerol, 0.01M PBS, pH 7.4
Purification Method	>95%, Protein G purified
Isotype	IgG
Clonality	Polyclonal
Alias	Integrator complex subunit 13 (Cell cycle regulator Mat89Bb homolog) (Germ cell tumor 1) (Protein asunder homolog) (Sarcoma antigen NY-SAR-95), INTS13, ASUN C12orf11 GCT1
Immunogen Species	Homo sapiens (Human)
Research Area	Cell Biology
Target Names	INTS13

Image



Western Blot

Positive WB detected in: HeLa whole cell lysate, K562 whole cell lysate, PC-3 whole cell lysate, 293 whole cell lysate

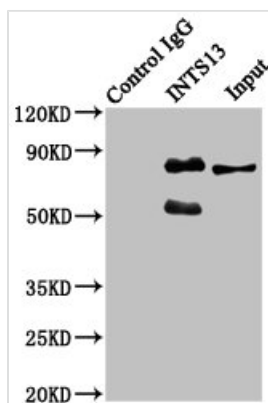
All lanes: INTS13 antibody at 3.4µg/ml

Secondary

Goat polyclonal to rabbit IgG at 1/50000 dilution

Predicted band size: 81, 69 kDa

Observed band size: 81 kDa



Immunoprecipitating INTS13 in Hela whole cell lysate

Lane 1: Rabbit control IgG instead of CSB-PA868331LA01HU in Hela whole cell lysate. For western blotting, a HRP-conjugated Protein G antibody was used as the secondary antibody (1/2000)

Lane 2: CSB-PA868331LA01HU (6μg) + Hela whole cell lysate (500μg)

Lane 3: Hela whole cell lysate (20μg)