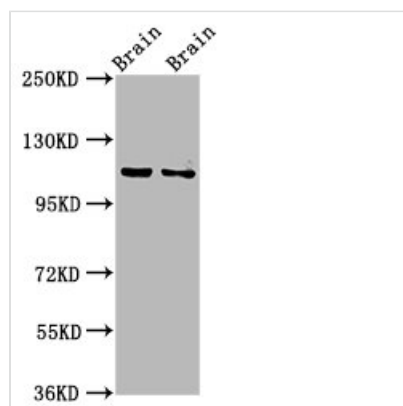




CLIP2 Antibody

Product Code	CSB-PA871393LA01HU
Storage	Upon receipt, store at -20°C or -80°C. Avoid repeated freeze.
Uniprot No.	Q9UDT6
Immunogen	Recombinant Human CAP-Gly domain-containing linker protein 2 protein (101-217AA)
Raised In	Rabbit
Species Reactivity	Human, Mouse, Rat
Tested Applications	ELISA, WB, IF; Recommended dilution: WB:1:500-1:5000, IF:1:50-1:200
Form	Liquid
Conjugate	Non-conjugated
Storage Buffer	Preservative: 0.03% Proclin 300 Constituents: 50% Glycerol, 0.01M PBS, pH 7.4
Purification Method	>95%, Protein G purified
Isotype	IgG
Clonality	Polyclonal
Alias	CAP-Gly domain-containing linker protein 2 (Cytoplasmic linker protein 115) (CLIP-115) (Cytoplasmic linker protein 2) (Williams-Beuren syndrome chromosomal region 3 protein) (Williams-Beuren syndrome chromosomal region 4 protein), CLIP2, CYLN2 KIAA0291 WBSCR3 WBSCR4 WSCR4
Immunogen Species	Homo sapiens (Human)
Research Area	Signal Transduction
Target Names	CLIP2

Image



Western Blot

Positive WB detected in: Rat brain tissue, Mouse brain tissue

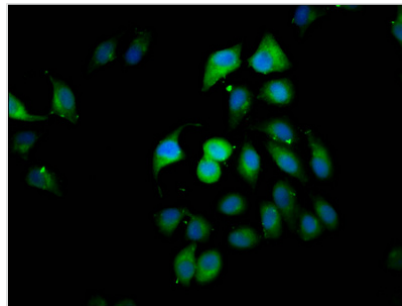
All lanes: CLIP2 antibody at 3.2μg/ml

Secondary

Goat polyclonal to rabbit IgG at 1/50000 dilution

Predicted band size: 116, 112 kDa

Observed band size: 116 kDa



Immunofluorescence staining of A549 cells with CSB-PA871393LA01HU at 1:166, counter-stained with DAPI. The cells were fixed in 4% formaldehyde, permeabilized using 0.2% Triton X-100 and blocked in 10% normal Goat Serum. The cells were then incubated with the antibody overnight at 4°C. The secondary antibody was Alexa Fluor 488-conjugated AffiniPure Goat Anti-Rabbit IgG(H+L).