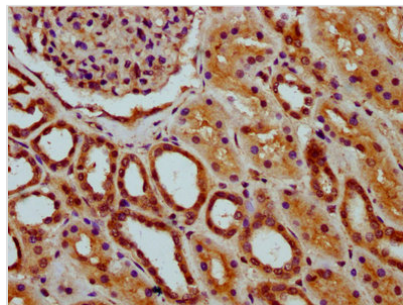




MEAF6 Antibody

Product Code	CSB-PA872530LA01HU
Storage	Upon receipt, store at -20°C or -80°C. Avoid repeated freeze.
Uniprot No.	Q9HAF1
Immunogen	Recombinant Human Chromatin modification-related protein MEAF6 protein (113-174AA)
Raised In	Rabbit
Species Reactivity	Human
Tested Applications	ELISA, IHC; Recommended dilution: IHC:1:200-1:500
Form	Liquid
Conjugate	Non-conjugated
Storage Buffer	Preservative: 0.03% Proclin 300 Constituents: 50% Glycerol, 0.01M PBS, pH 7.4
Purification Method	>95%, Protein G purified
Isotype	IgG
Clonality	Polyclonal
Alias	Chromatin modification-related protein MEAF6 (MYST/Esa1-associated factor 6) (Esa1-associated factor 6 homolog) (Protein EAF6 homolog) (hEAF6) (Sarcoma antigen NY-SAR-91), MEAF6, C1orf149 CENP-28 EAF6
Immunogen Species	Homo sapiens (Human)
Research Area	Epigenetics and Nuclear Signaling
Target Names	MEAF6

Image



IHC image of CSB-PA872530LA01HU diluted at 1:200 and staining in paraffin-embedded human kidney tissue performed on a Leica Bond™ system. After dewaxing and hydration, antigen retrieval was mediated by high pressure in a citrate buffer (pH 6.0). Section was blocked with 10% normal goat serum 30min at RT. Then primary antibody (1% BSA) was incubated at 4°C overnight. The primary is detected by a biotinylated secondary antibody and visualized using an HRP conjugated SP system.

Usage For Research Use Only. Not for use in diagnostic or therapeutic procedures.