

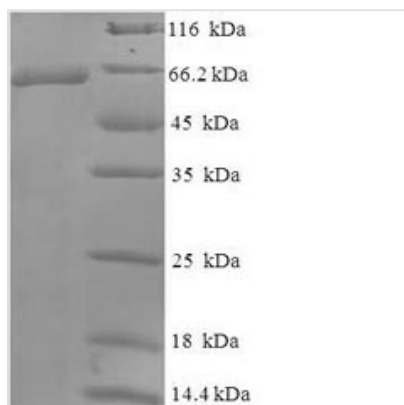


# Recombinant Human Wilms tumor protein (WT1)

<b>Product Code</b>	CSB-EP026158HU
<b>Relevance</b>	Transcription factor that plays an important role in cellular development and cell survival. Regulates the expression of numerous target genes, including EPO. Plays an essential role for development of the urogenital syst. Recognizes and binds to the DNA sequence 5'-CGCCCCCGC-3'. It has a tumor suppressor as well as an oncogenic role in tumor formation. Function may be isoform-specific: isoforms lacking the KTS motif may act as transcription factors. Isoforms containing the KTS motif may bind mRNA and play a role in mRNA metabolism or splicing. Isoform 1 has lower affinity for DNA, and can bind RNA.
<b>Abbreviation</b>	Recombinant Human WT1 protein
<b>Storage</b>	The shelf life is related to many factors, storage state, buffer ingredients, storage temperature and the stability of the protein itself. Generally, the shelf life of liquid form is 6 months at -20°C/-80°C. The shelf life of lyophilized form is 12 months at -20°C/-80°C.
<b>Uniprot No.</b>	P19544
<b>Alias</b>	WT33
<b>Product Type</b>	Recombinant Protein
<b>Immunogen Species</b>	Homo sapiens (Human)
<b>Purity</b>	Greater than 90% as determined by SDS-PAGE.
<b>Sequence</b>	MGSDVRDLNALLPAVPSLGGGGGCALPVSQAAQWAPVLDFAAPPASAYGSL GGPAPPPAPPPPPPPPHSFIKQEPSWGGAEPHEEQCLSAFTVHFSGQFTGT AGACRYGPFPGPPPSQASSGQARMFPNAPYLPSCLESQPAIRNQGYSTVTFD GTPSYGHTPSHAAQFPNHSFKHEDPMGQQGSLGEEQQYSVPPPVYGCHTPT DSCTGSQALLLRTPYSSDNLYQMTSQLECMWQMNLGATLKGVAAGSSSS VKWTEGQSNHSTGYESDNHTTPILCGAQYRIHTHGVRFGIQDVRVPGVAPTL VRSASETSEKRPFMCAYPGCNKRYFKLSHLQMHSRKHTGEKPYQCDFKDCE RRFSRSDQLKRHRHTGVKPFQCKTCQRKFSRSDHLKTHTRTHTGKTSEKP FSCRWPSCQKKFARSDLVRRHHNMHQRNMTKLQLAL
<b>Research Area</b>	Transcription
<b>Source</b>	E.coli
<b>Target Names</b>	WT1
<b>Protein Names</b>	Recommended name: Wilms tumor protein Alternative name(s): WT33
<b>Expression Region</b>	1-449aa
<b>Notes</b>	Repeated freezing and thawing is not recommended. Store working aliquots at 4°C for up to one week.
<b>Tag Info</b>	N-terminal 6xHis-SUMO-tagged
<b>Mol. Weight</b>	65.2kDa
<b>Protein Length</b>	Full Length



## Image



(Tris-Glycine gel) Discontinuous SDS-PAGE (reduced) with 5% enrichment gel and 15% separation gel.

## Reconstitution

We recommend that this vial be briefly centrifuged prior to opening to bring the contents to the bottom. Please reconstitute protein in deionized sterile water to a concentration of 0.1-1.0 mg/mL. We recommend to add 5-50% of glycerol (final concentration) and aliquot for long-term storage at  $-20^{\circ}\text{C}/-80^{\circ}\text{C}$ . Our default final concentration of glycerol is 50%. Customers could use it as reference.

## Shelf Life

The shelf life is related to many factors, storage state, buffer ingredients, storage temperature and the stability of the protein itself.

Generally, the shelf life of liquid form is 6 months at  $-20^{\circ}\text{C}/-80^{\circ}\text{C}$ . The shelf life of lyophilized form is 12 months at  $-20^{\circ}\text{C}/-80^{\circ}\text{C}$ .