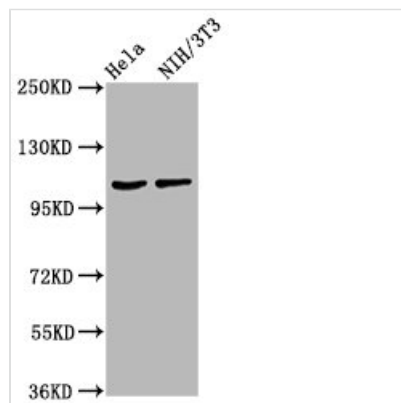




MKL2 Antibody

Product Code	CSB-PA891962LA01HU
Storage	Upon receipt, store at -20°C or -80°C. Avoid repeated freeze.
Uniprot No.	Q9ULH7
Immunogen	Recombinant Human MKL/myocardin-like protein 2 protein (164-313AA)
Raised In	Rabbit
Species Reactivity	Human, Mouse
Tested Applications	ELISA, WB, IHC; Recommended dilution: WB:1:500-1:5000, IHC:1:500-1:1000
Form	Liquid
Conjugate	Non-conjugated
Storage Buffer	Preservative: 0.03% Proclin 300 Constituents: 50% Glycerol, 0.01M PBS, pH 7.4
Purification Method	>95%, Protein G purified
Isotype	IgG
Clonality	Polyclonal
Alias	MKL/myocardin-like protein 2 (Megakaryoblastic leukemia 2) (Myocardin-related transcription factor B) (MRTF-B), MKL2, KIAA1243 MRTFB
Immunogen Species	Homo sapiens (Human)
Research Area	Epigenetics and Nuclear Signaling
Target Names	MKL2

Image



Western Blot

Positive WB detected in: HeLa whole cell lysate, NIH/3T3 whole cell lysate

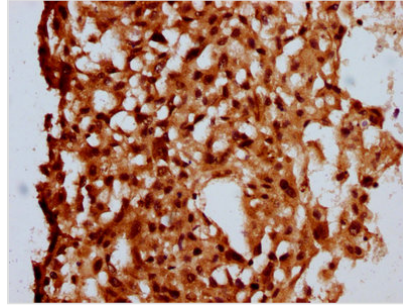
All lanes: MKL2 antibody at 4.2µg/ml

Secondary

Goat polyclonal to rabbit IgG at 1/50000 dilution

Predicted band size: 119, 43, 52, 115, 120 kDa

Observed band size: 119 kDa



IHC image of CSB-PA891962LA01HU diluted at 1:500 and staining in paraffin-embedded human melanoma performed on a Leica Bond™ system. After dewaxing and hydration, antigen retrieval was mediated by high pressure in a citrate buffer (pH 6.0). Section was blocked with 10% normal goat serum 30min at RT. Then primary antibody (1% BSA) was incubated at 4°C overnight. The primary is detected by a biotinylated secondary antibody and visualized using an HRP conjugated SP system.

Usage

For Research Use Only. Not for use in diagnostic or therapeutic procedures.