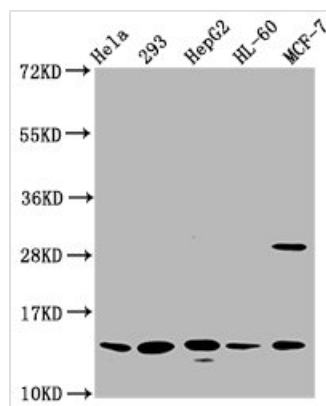




HIST1H2BC (Ab-108) Antibody

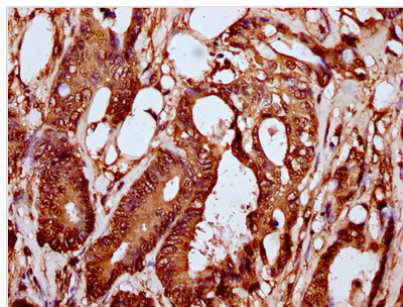
Product Code	CSB-PA010403OA108nforHU
Storage	Upon receipt, store at -20°C or -80°C. Avoid repeated freeze.
Uniprot No.	P62807
Immunogen	Peptide sequence around site of Lys (108) derived from Human Histone H2B type 1-C/E/F/G/I
Raised In	Rabbit
Species Reactivity	Human
Tested Applications	ELISA, WB, IHC, IP; Recommended dilution: WB:1:100-1:1000, IHC:1:10-1:100, IP:1:200-1:2000
Form	Liquid
Conjugate	Non-conjugated
Storage Buffer	Preservative: 0.03% Proclin 300 Constituents: 50% Glycerol, 0.01M PBS, pH 7.4
Purification Method	Antigen Affinity Purified
Isotype	IgG
Clonality	Polyclonal
Alias	Histone H2B type 1-C/E/F/G/I (Histone H2B.1 A) (Histone H2B.a) (H2B/a) (Histone H2B.g) (H2B/g) (Histone H2B.h) (H2B/h) (Histone H2B.k) (H2B/k) (Histone H2B.l) (H2B/l), HIST1H2BC; HIST1H2BE; HIST1H2BF; HIST1H2BG; HIST1H2BI, H2BFL; H2BFH; H2BFG; H2BFA; H2BFBK
Immunogen Species	Homo sapiens (Human)
Research Area	Epigenetics and Nuclear Signaling
Target Names	HIST1H2BC

Image

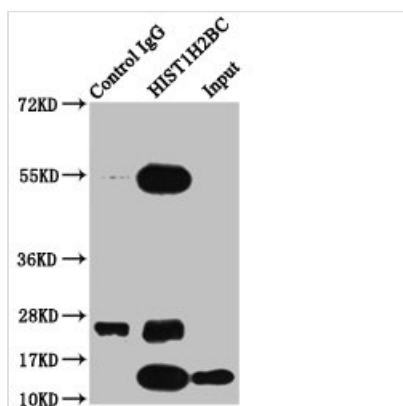


Western Blot

Positive WB detected in: HeLa whole cell lysate, 293 whole cell lysate, HepG2 whole cell lysate, HL60 whole cell lysate, MCF-7 whole cell lysate
All lanes: HIST1H2BC antibody at 0.79µg/ml
Secondary
Goat polyclonal to rabbit IgG at 1/50000 dilution
Predicted band size: 14 kDa
Observed band size: 14 kDa



IHC image of CSB-PA010403OA108nforHU diluted at 1:10 and staining in paraffin-embedded human colon cancer performed on a Leica BondTM system. After dewaxing and hydration, antigen retrieval was mediated by high pressure in a citrate buffer (pH 6.0). Section was blocked with 10% normal goat serum 30min at RT. Then primary antibody (1% BSA) was incubated at 4°C overnight. The primary is detected by a biotinylated secondary antibody and visualized using an HRP conjugated SP system.



Immunoprecipitating HIST1H2BC in HepG2 whole cell lysate

Lane 1: Rabbit control IgG instead of CSB-PA010403OA108nforHU in HepG2 whole cell lysate. For western blotting, a HRP-conjugated Protein G antibody was used as the secondary antibody (1/2000)

Lane 2: CSB-PA010403OA108nforHU (5μg) + HepG2 whole cell lysate (500μg)

Lane 3: HepG2 whole cell lysate (20μg)