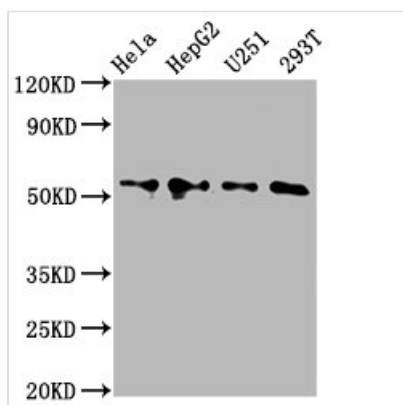




# CCT6A Antibody

<b>Product Code</b>	CSB-PA004865EA01HU
<b>Storage</b>	Upon receipt, store at -20°C or -80°C. Avoid repeated freeze.
<b>Uniprot No.</b>	P40227
<b>Immunogen</b>	Recombinant Human T-complex protein 1 subunit zeta protein (80-250AA)
<b>Raised In</b>	Rabbit
<b>Species Reactivity</b>	Human
<b>Tested Applications</b>	ELISA, WB; Recommended dilution: WB:1:500-1:5000
<b>Form</b>	Liquid
<b>Conjugate</b>	Non-conjugated
<b>Storage Buffer</b>	Preservative: 0.03% Proclin 300 Constituents: 50% Glycerol, 0.01M PBS, pH 7.4
<b>Purification Method</b>	>95%, Protein G purified
<b>Isotype</b>	IgG
<b>Clonality</b>	Polyclonal
<b>Alias</b>	T-complex protein 1 subunit zeta (TCP-1-zeta) (Acute morphine dependence-related protein 2) (CCT-zeta-1) (HTR3) (Tcp20), CCT6A, CCT6 CCTZ
<b>Immunogen Species</b>	Homo sapiens (Human)
<b>Research Area</b>	Signal Transduction
<b>Target Names</b>	CCT6A

## Image



### Western Blot

Positive WB detected in: HeLa whole cell lysate, HepG2 whole cell lysate, U251 whole cell lysate, 293T whole cell lysate

All lanes: CCT6A antibody at 4.2µg/ml

Secondary

Goat polyclonal to rabbit IgG at 1/50000 dilution

Predicted band size: 59, 54 kDa

Observed band size: 54 kDa

## Usage

For Research Use Only. Not for use in diagnostic or therapeutic procedures.