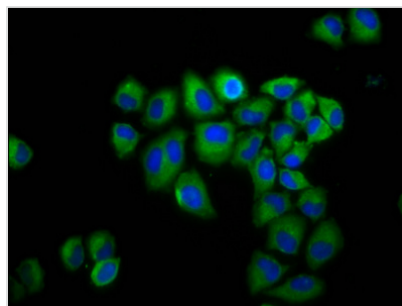




GLRB Antibody

Product Code	CSB-PA009520LA01HU
Storage	Upon receipt, store at -20°C or -80°C. Avoid repeated freeze.
Uniprot No.	P48167
Immunogen	Recombinant Human Glycine receptor subunit beta protein (355-472AA)
Raised In	Rabbit
Species Reactivity	Human
Tested Applications	ELISA, IF; Recommended dilution: IF:1:200-1:500
Form	Liquid
Conjugate	Non-conjugated
Storage Buffer	Preservative: 0.03% Proclin 300 Constituents: 50% Glycerol, 0.01M PBS, pH 7.4
Purification Method	>95%, Protein G purified
Isotype	IgG
Clonality	Polyclonal
Alias	Glycine receptor subunit beta (Glycine receptor 58 kDa subunit), GLRB
Immunogen Species	Homo sapiens (Human)
Research Area	Neuroscience
Target Names	GLRB

Image



Immunofluorescence staining of HeLa cells with CSB-PA009520LA01HU at 1:200, counter-stained with DAPI. The cells were fixed in 4% formaldehyde, permeabilized using 0.2% Triton X-100 and blocked in 10% normal Goat Serum. The cells were then incubated with the antibody overnight at 4°C. The secondary antibody was Alexa Fluor 488-conjugated AffiniPure Goat Anti-Rabbit IgG(H+L).

Usage

For Research Use Only. Not for use in diagnostic or therapeutic procedures.