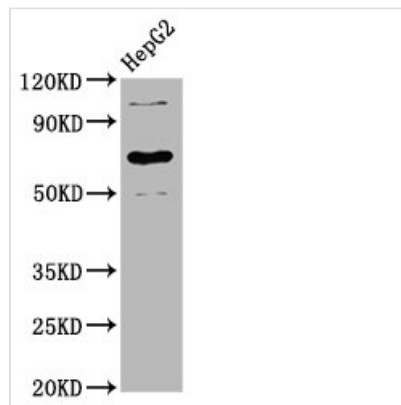




LILRB3 Antibody

Product Code	CSB-PA012941LA01HU
Storage	Upon receipt, store at -20°C or -80°C. Avoid repeated freeze.
Uniprot No.	O75022
Immunogen	Recombinant Human Leukocyte immunoglobulin-like receptor subfamily B member 3 protein (470-624AA)
Raised In	Rabbit
Species Reactivity	Human
Tested Applications	ELISA, WB, IF; Recommended dilution: WB:1:500-1:5000, IF:1:50-1:200
Form	Liquid
Conjugate	Non-conjugated
Storage Buffer	Preservative: 0.03% Proclin 300 Constituents: 50% Glycerol, 0.01M PBS, pH 7.4
Purification Method	>95%, Protein G purified
Isotype	IgG
Clonality	Polyclonal
Alias	Leukocyte immunoglobulin-like receptor subfamily B member 3 (LIR-3) (Leukocyte immunoglobulin-like receptor 3) (CD85 antigen-like family member A) (Immunoglobulin-like transcript 5) (ILT-5) (Monocyte inhibitory receptor HL9) (CD antigen CD85a), LILRB3, ILT5 LIR3
Immunogen Species	Homo sapiens (Human)
Research Area	Immunology
Target Names	LILRB3

Image



Western Blot

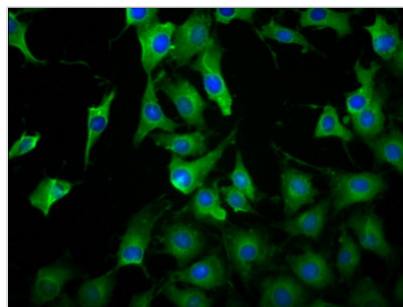
Positive WB detected in: HepG2 whole cell lysate

All lanes: LILRB3 antibody at 3.9µg/ml
Secondary

Goat polyclonal to rabbit IgG at 1/50000 dilution

Predicted band size: 70, 72 kDa

Observed band size: 70 kDa



Immunofluorescence staining of NIH/3T3 cells with CSB-PA012941LA01HU at 1:100, counter-stained with DAPI. The cells were fixed in 4% formaldehyde, permeabilized using 0.2% Triton X-100 and blocked in 10% normal Goat Serum. The cells were then incubated with the antibody overnight at 4°C. The secondary antibody was Alexa Fluor 488-conjugated AffiniPure Goat Anti-Rabbit IgG(H+L).

Usage

For Research Use Only. Not for use in diagnostic or therapeutic procedures.