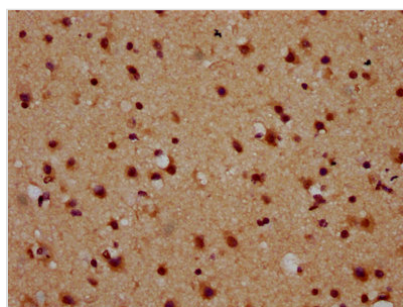




NAP1L5 Antibody

| | |
|----------------------------|---|
| Product Code | CSB-PA015445LA01HU |
| Storage | Upon receipt, store at -20°C or -80°C. Avoid repeated freeze. |
| Uniprot No. | Q96NT1 |
| Immunogen | Recombinant Human Nucleosome assembly protein 1-like 5 protein (1-67AA) |
| Raised In | Rabbit |
| Species Reactivity | Human |
| Tested Applications | ELISA, IHC; Recommended dilution: IHC:1:500-1:1000 |
| Form | Liquid |
| Conjugate | Non-conjugated |
| Storage Buffer | Preservative: 0.03% Proclin 300 Constituents: 50% Glycerol, 0.01M PBS, pH 7.4 |
| Purification Method | >95%, Protein G purified |
| Isotype | IgG |
| Clonality | Polyclonal |
| Alias | Nucleosome assembly protein 1-like 5 (Down-regulated in liver malignancy), NAP1L5, DRLM |
| Immunogen Species | Homo sapiens (Human) |
| Research Area | Cell Biology |
| Target Names | NAP1L5 |

Image



IHC image of CSB-PA015445LA01HU diluted at 1:600 and staining in paraffin-embedded human brain tissue performed on a Leica Bond™ system. After dewaxing and hydration, antigen retrieval was mediated by high pressure in a citrate buffer (pH 6.0). Section was blocked with 10% normal goat serum 30min at RT. Then primary antibody (1% BSA) was incubated at 4°C overnight. The primary is detected by a biotinylated secondary antibody and visualized using an HRP conjugated SP system.

Usage

For Research Use Only. Not for use in diagnostic or therapeutic procedures.