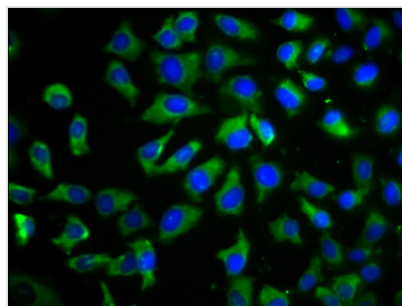




# TMEM26 Antibody

|                            |  |
|----------------------------|--|
| <b>Product Code</b>        | CSB-PA023822LA01HU   |
| <b>Storage</b>             | Upon receipt, store at -20°C or -80°C. Avoid repeated freeze.                    |
| <b>Uniprot No.</b>         | Q6ZUK4   |
| <b>Immunogen</b>           | Recombinant Human Transmembrane protein 26 protein (302-368AA)                   |
| <b>Raised In</b>           | Rabbit   |
| <b>Species Reactivity</b>  | Human  |
| <b>Tested Applications</b> | ELISA, IF; Recommended dilution: IF:1:50-1:200                                   |
| <b>Form</b>                | Liquid   |
| <b>Conjugate</b>           | Non-conjugated   |
| <b>Storage Buffer</b>      | Preservative: 0.03% Proclin 300<br>Constituents: 50% Glycerol, 0.01M PBS, pH 7.4 |
| <b>Purification Method</b> | >95%, Protein G purified   |
| <b>Isotype</b>             | IgG  |
| <b>Clonality</b>           | Polyclonal   |
| <b>Alias</b>               | Transmembrane protein 26, TMEM26   |
| <b>Immunogen Species</b>   | Homo sapiens (Human)   |
| <b>Research Area</b>       | Cell Biology   |
| <b>Target Names</b>        | TMEM26   |

## Image



Immunofluorescence staining of A549 cells with CSB-PA023822LA01HU at 1:100, counter-stained with DAPI. The cells were fixed in 4% formaldehyde, permeabilized using 0.2% Triton X-100 and blocked in 10% normal Goat Serum. The cells were then incubated with the antibody overnight at 4°C. The secondary antibody was Alexa Fluor 488-conjugated AffiniPure Goat Anti-Rabbit IgG(H+L).