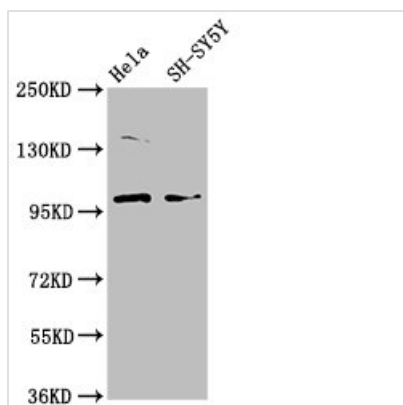




PDE6C Antibody

Product Code	CSB-PA23139A0Rb
Storage	Upon receipt, store at -20°C or -80°C. Avoid repeated freeze.
Uniprot No.	P51160
Immunogen	Recombinant Human Cone cGMP-specific 3',5'-cyclic phosphodiesterase subunit alpha' protein (285-451AA)
Raised In	Rabbit
Species Reactivity	Human
Tested Applications	ELISA, WB, IF; Recommended dilution: WB:1:500-1:5000, IF:1:50-1:200
Form	Liquid
Conjugate	Non-conjugated
Storage Buffer	Preservative: 0.03% Proclin 300 Constituents: 50% Glycerol, 0.01M PBS, pH 7.4
Purification Method	>95%, Protein G purified
Isotype	IgG
Clonality	Polyclonal
Alias	Cone cGMP-specific 3',5'-cyclic phosphodiesterase subunit alpha' (EC 3.1.4.35) (cGMP phosphodiesterase 6C), PDE6C, PDEA2
Immunogen Species	Homo sapiens (Human)
Research Area	Signal Transduction
Target Names	PDE6C

Image



Western Blot

Positive WB detected in: HeLa whole cell lysate, SH-SY5Y whole cell lysate

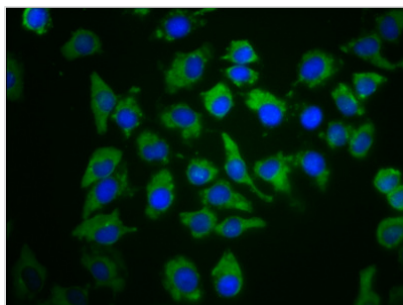
All lanes: PDE6C antibody at 3.7µg/ml

Secondary

Goat polyclonal to rabbit IgG at 1/50000 dilution

Predicted band size: 100 kDa

Observed band size: 100 kDa



Immunofluorescence staining of A549 cells with CSB-PA23139A0Rb at 1:66, counter-stained with DAPI. The cells were fixed in 4% formaldehyde, permeabilized using 0.2% Triton X-100 and blocked in 10% normal Goat Serum. The cells were then incubated with the antibody overnight at 4°C. The secondary antibody was Alexa Fluor 488-conjugated AffiniPure Goat Anti-Rabbit IgG(H+L).

Usage

For Research Use Only. Not for use in diagnostic or therapeutic procedures.