



# TIPARP Antibody

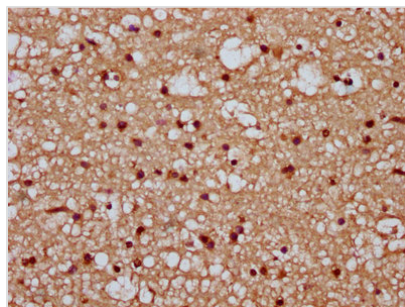
<b>Product Code</b>	CSB-PA801800LA01HU
<b>Storage</b>	Upon receipt, store at -20°C or -80°C. Avoid repeated freeze.
<b>Uniprot No.</b>	Q7Z3E1
<b>Immunogen</b>	Recombinant Human TCDD-inducible poly [ADP-ribose] polymerase protein (74-178AA)
<b>Raised In</b>	Rabbit
<b>Species Reactivity</b>	Human
<b>Tested Applications</b>	ELISA, WB, IHC; Recommended dilution: WB:1:500-1:5000, IHC:1:200-1:500
<b>Form</b>	Liquid
<b>Conjugate</b>	Non-conjugated
<b>Storage Buffer</b>	Preservative: 0.03% Proclin 300 Constituents: 50% Glycerol, 0.01M PBS, pH 7.4
<b>Purification Method</b>	>95%, Protein G purified
<b>Isotype</b>	IgG
<b>Clonality</b>	Polyclonal
<b>Alias</b>	TCDD-inducible poly [ADP-ribose] polymerase (EC 2.4.2.30) (ADP-ribosyltransferase diphtheria toxin-like 14) (ARTD14) (Poly [ADP-ribose] polymerase 7) (PARP-7), TIPARP, PARP7
<b>Immunogen Species</b>	Homo sapiens (Human)
<b>Research Area</b>	Epigenetics and Nuclear Signaling
<b>Target Names</b>	TIPARP

## Image

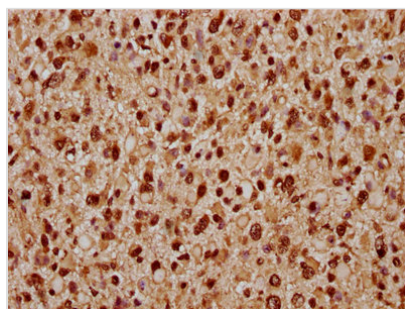


### Western Blot

Positive WB detected in: U87 whole cell lysate, SH-SY5Y whole cell lysate  
 All lanes: TIPARP antibody at 4.6µg/ml  
 Secondary  
 Goat polyclonal to rabbit IgG at 1/50000 dilution  
 Predicted band size: 77 kDa  
 Observed band size: 77 kDa



IHC image of CSB-PA801800LA01HU diluted at 1:300 and staining in paraffin-embedded human brain tissue performed on a Leica Bond™ system. After dewaxing and hydration, antigen retrieval was mediated by high pressure in a citrate buffer (pH 6.0). Section was blocked with 10% normal goat serum 30min at RT. Then primary antibody (1% BSA) was incubated at 4°C overnight. The primary is detected by a biotinylated secondary antibody and visualized using an HRP conjugated SP system.



IHC image of CSB-PA801800LA01HU diluted at 1:300 and staining in paraffin-embedded human glioma performed on a Leica Bond™ system. After dewaxing and hydration, antigen retrieval was mediated by high pressure in a citrate buffer (pH 6.0). Section was blocked with 10% normal goat serum 30min at RT. Then primary antibody (1% BSA) was incubated at 4°C overnight. The primary is detected by a biotinylated secondary antibody and visualized using an HRP conjugated SP system.

## Usage

For Research Use Only. Not for use in diagnostic or therapeutic procedures.