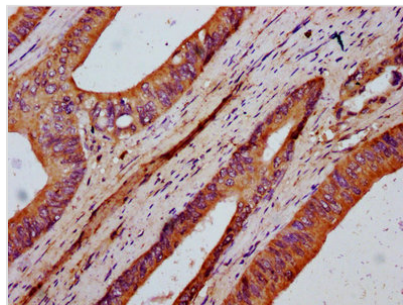




# FKBP10 Antibody

|                            |  |
|----------------------------|--|
| <b>Product Code</b>        | CSB-PA822180LA01HU   |
| <b>Storage</b>             | Upon receipt, store at -20°C or -80°C. Avoid repeated freeze.  |
| <b>Uniprot No.</b>         | Q96AY3   |
| <b>Immunogen</b>           | Recombinant Human Peptidyl-prolyl cis-trans isomerase FKBP10 protein (459-579AA)   |
| <b>Raised In</b>           | Rabbit   |
| <b>Species Reactivity</b>  | Human  |
| <b>Tested Applications</b> | ELISA, IHC; Recommended dilution: IHC:1:200-1:500  |
| <b>Form</b>                | Liquid   |
| <b>Conjugate</b>           | Non-conjugated   |
| <b>Storage Buffer</b>      | Preservative: 0.03% Proclin 300<br>Constituents: 50% Glycerol, 0.01M PBS, pH 7.4   |
| <b>Purification Method</b> | >95%, Protein G purified   |
| <b>Isotype</b>             | IgG  |
| <b>Clonality</b>           | Polyclonal   |
| <b>Alias</b>               | Peptidyl-prolyl cis-trans isomerase FKBP10 (PPIase FKBP10) (EC 5.2.1.8) (65 kDa FK506-binding protein) (65 kDa FKBP) (FKBP-65) (FK506-binding protein 10) (FKBP-10) (Immunophilin FKBP65) (Rotamase), FKBP10, FKBP65 |
| <b>Immunogen Species</b>   | Homo sapiens (Human)   |
| <b>Research Area</b>       | Tags & Cell Markers  |
| <b>Target Names</b>        | FKBP10   |

## Image



IHC image of CSB-PA822180LA01HU diluted at 1:400 and staining in paraffin-embedded human colon cancer performed on a Leica Bond<sup>TM</sup> system. After dewaxing and hydration, antigen retrieval was mediated by high pressure in a citrate buffer (pH 6.0). Section was blocked with 10% normal goat serum 30min at RT. Then primary antibody (1% BSA) was incubated at 4°C overnight. The primary is detected by a biotinylated secondary antibody and visualized using an HRP conjugated SP system.