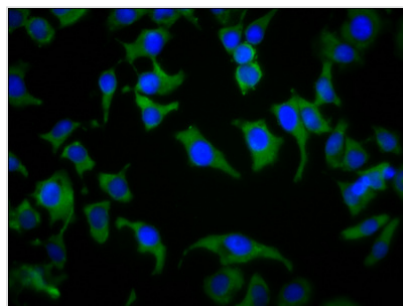




SPPL2B Antibody

Product Code	CSB-PA823457LA01HU
Storage	Upon receipt, store at -20°C or -80°C. Avoid repeated freeze.
Uniprot No.	Q8TCT7
Immunogen	Recombinant Human Signal peptide peptidase-like 2B protein (492-592AA)
Raised In	Rabbit
Species Reactivity	Human
Tested Applications	ELISA, IF; Recommended dilution: IF:1:50-1:200
Form	Liquid
Conjugate	Non-conjugated
Storage Buffer	Preservative: 0.03% Proclin 300 Constituents: 50% Glycerol, 0.01M PBS, pH 7.4
Purification Method	>95%, Protein G purified
Isotype	IgG
Clonality	Polyclonal
Alias	Signal peptide peptidase-like 2B (SPP-like 2B) (SPPL2b) (EC 3.4.23.-) (Intramembrane protease 4) (IMP-4) (Presenilin homologous protein 4) (PSH4) (Presenilin-like protein 1), SPPL2B, IMP4 KIAA1532 PSL1
Immunogen Species	Homo sapiens (Human)
Research Area	Others
Target Names	SPPL2B

Image



Immunofluorescence staining of A549 cells with CSB-PA823457LA01HU at 1:133, counter-stained with DAPI. The cells were fixed in 4% formaldehyde, permeabilized using 0.2% Triton X-100 and blocked in 10% normal Goat Serum. The cells were then incubated with the antibody overnight at 4°C. The secondary antibody was Alexa Fluor 488-conjugated AffiniPure Goat Anti-Rabbit IgG(H+L).