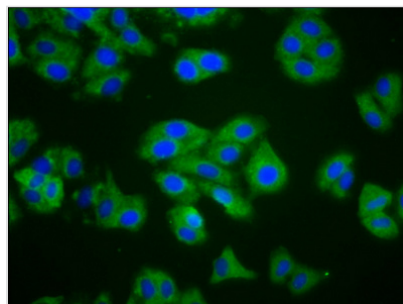




CTAGE1 Antibody

Product Code	CSB-PA836295LA01HU
Storage	Upon receipt, store at -20°C or -80°C. Avoid repeated freeze.
Uniprot No.	Q96RT6
Immunogen	Recombinant Human cTAGE family member 2 protein (471-595AA)
Raised In	Rabbit
Species Reactivity	Human
Tested Applications	ELISA, IF; Recommended dilution: IF:1:200-1:500
Form	Liquid
Conjugate	Non-conjugated
Storage Buffer	Preservative: 0.03% Proclin 300 Constituents: 50% Glycerol, 0.01M PBS, pH 7.4
Purification Method	>95%, Protein G purified
Isotype	IgG
Clonality	Polyclonal
Alias	cTAGE family member 2 (Protein cTAGE-2) (Cancer/testis antigen 21.2) (CT21.2), CTAGE1, CTAGE2
Immunogen Species	Homo sapiens (Human)
Research Area	Others
Target Names	CTAGE1

Image



Immunofluorescence staining of HepG2 cells with CSB-PA836295LA01HU at 1:200, counter-stained with DAPI. The cells were fixed in 4% formaldehyde, permeabilized using 0.2% Triton X-100 and blocked in 10% normal Goat Serum. The cells were then incubated with the antibody overnight at 4°C. The secondary antibody was Alexa Fluor 488-conjugated AffiniPure Goat Anti-Rabbit IgG(H+L).