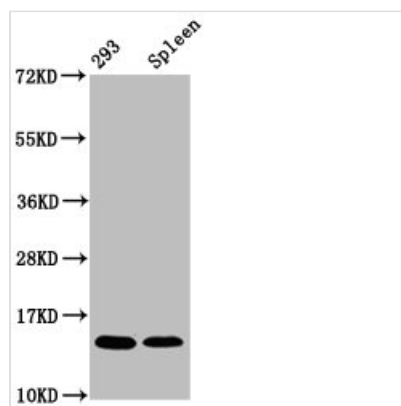




# HIST1H2BC (Ab-116) Antibody

<b>Product Code</b>	CSB-PA010403OA116ngluHU
<b>Storage</b>	Upon receipt, store at -20°C or -80°C. Avoid repeated freeze.
<b>Uniprot No.</b>	P62807
<b>Immunogen</b>	Peptide sequence around site of Lys (116) derived from Human Histone H2B type 1-C/E/F/G/I
<b>Raised In</b>	Rabbit
<b>Species Reactivity</b>	Human, Rat
<b>Tested Applications</b>	ELISA, WB, IHC; Recommended dilution: WB:1:50-1:500, IHC:1:10-1:100
<b>Form</b>	Liquid
<b>Conjugate</b>	Non-conjugated
<b>Storage Buffer</b>	Preservative: 0.03% Proclin 300 Constituents: 50% Glycerol, 0.01M PBS, pH 7.4
<b>Purification Method</b>	Antigen Affinity Purified
<b>Isotype</b>	IgG
<b>Clonality</b>	Polyclonal
<b>Alias</b>	Histone H2B type 1-C/E/F/G/I (Histone H2B.1 A) (Histone H2B.a) (H2B/a) (Histone H2B.g) (H2B/g) (Histone H2B.h) (H2B/h) (Histone H2B.k) (H2B/k) (Histone H2B.l) (H2B/l), HIST1H2BC; HIST1H2BE; HIST1H2BF; HIST1H2BG; HIST1H2BI, H2BFL; H2BFH; H2BFG; H2BFA; H2BFK
<b>Immunogen Species</b>	Homo sapiens (Human)
<b>Research Area</b>	Epigenetics and Nuclear Signaling
<b>Target Names</b>	HIST1H2BC

## Image



### Western Blot

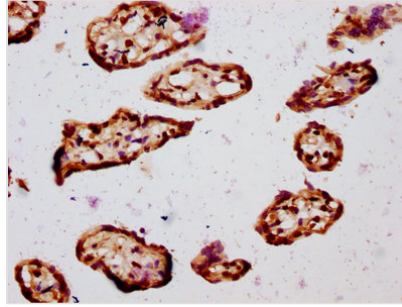
Positive WB detected in: 293 whole cell lysate, Rat spleen tissue

All lanes: HIST1H2BC antibody at 1.64µg/ml  
Secondary

Goat polyclonal to rabbit IgG at 1/50000 dilution

Predicted band size: 14 kDa

Observed band size: 14 kDa



IHC image of CSB-PA010403OA116ngluHU diluted at 1:20 and staining in paraffin-embedded human placenta tissue performed on a Leica Bond™ system. After dewaxing and hydration, antigen retrieval was mediated by high pressure in a citrate buffer (pH 6.0). Section was blocked with 10% normal goat serum 30min at RT. Then primary antibody (1% BSA) was incubated at 4°C overnight. The primary is detected by a biotinylated secondary antibody and visualized using an HRP conjugated SP system.