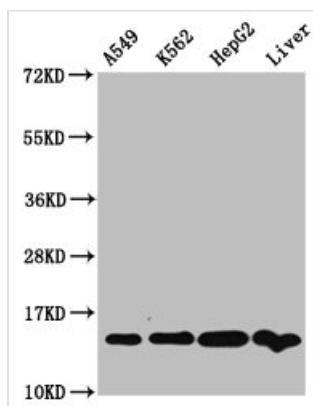




# HIST1H2AG (Ab-74) Antibody

<b>Product Code</b>	CSB-PA010389OA74nacHU
<b>Storage</b>	Upon receipt, store at -20°C or -80°C. Avoid repeated freeze.
<b>Uniprot No.</b>	P0C0S8
<b>Immunogen</b>	Peptide sequence around site of Lys (74) derived from Human Histone H2A type 1
<b>Raised In</b>	Rabbit
<b>Species Reactivity</b>	Human, Rat
<b>Tested Applications</b>	ELISA, WB, IP; Recommended dilution: WB:1:100-1:1000, IP:1:200-1:2000
<b>Form</b>	Liquid
<b>Conjugate</b>	Non-conjugated
<b>Storage Buffer</b>	Preservative: 0.03% Proclin 300 Constituents: 50% Glycerol, 0.01M PBS, pH 7.4
<b>Purification Method</b>	Antigen Affinity Purified
<b>Isotype</b>	IgG
<b>Clonality</b>	Polyclonal
<b>Alias</b>	Histone H2A type 1 (H2A.1) (Histone H2A/pt1), HIST1H2AG; HIST1H2AI; HIST1H2AK; HIST1H2AL; HIST1H2AM, H2AFP; H2AFC; H2AFD; H2AFI; H2AFN
<b>Immunogen Species</b>	Homo sapiens (Human)
<b>Research Area</b>	Epigenetics and Nuclear Signaling
<b>Target Names</b>	HIST1H2AG

## Image



### Western Blot

Positive WB detected in: A549 whole cell lysate, K562 whole cell lysate, HepG2 whole cell lysate, Rat liver tissue

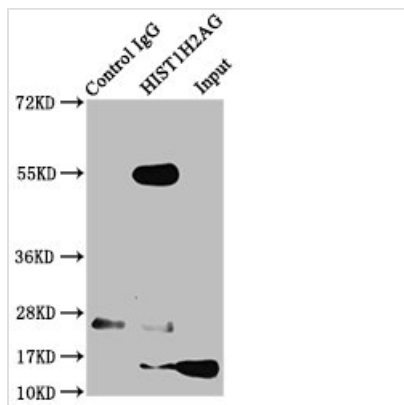
All lanes: HIST1H2AG antibody at 1µg/ml

Secondary

Goat polyclonal to rabbit IgG at 1/50000 dilution

Predicted band size: 15 kDa

Observed band size: 15 kDa



Immunoprecipitating HIST1H2AG in HepG2 whole cell lysate

Lane 1: Rabbit control IgG instead of CSB-PA010389OA74nacHU in HepG2 whole cell lysate. For western blotting, a HRP-conjugated Protein G antibody was used as the secondary antibody (1/2000)

Lane 2: CSB-PA010389OA74nacHU (5µg) + HepG2 whole cell lysate (500µg)

Lane 3: HepG2 whole cell lysate (20µg)

## Usage

For Research Use Only. Not for use in diagnostic or therapeutic procedures.