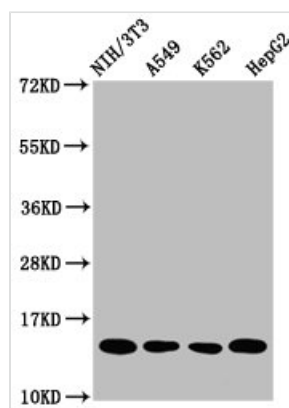




HIST1H2AG (Ab-118) Antibody

Product Code	CSB-PA010389OA118nforHU
Storage	Upon receipt, store at -20°C or -80°C. Avoid repeated freeze.
Uniprot No.	P0C0S8
Immunogen	Peptide sequence around site of Lys (118) derived from Human Histone H2A type 1
Raised In	Rabbit
Species Reactivity	Human, Mouse
Tested Applications	ELISA, WB, IHC, IF, IP; Recommended dilution: WB:1:100-1:1000, IHC:1:10-1:100, IF:1:1-1:10, IP:1:200-1:2000
Form	Liquid
Conjugate	Non-conjugated
Storage Buffer	Preservative: 0.03% Proclin 300 Constituents: 50% Glycerol, 0.01M PBS, pH 7.4
Purification Method	Antigen Affinity Purified
Isotype	IgG
Clonality	Polyclonal
Alias	Histone H2A type 1 (H2A.1) (Histone H2A/ptl), HIST1H2AG; HIST1H2AI; HIST1H2AK; HIST1H2AL; HIST1H2AM, H2AFP; H2AFC; H2AFD; H2AFI; H2AFN
Immunogen Species	Homo sapiens (Human)
Research Area	Epigenetics and Nuclear Signaling
Target Names	HIST1H2AG

Image



Western Blot

Positive WB detected in: NIH/3T3 whole cell lysate, A549 whole cell lysate, K562 whole cell lysate, HepG2 whole cell lysate

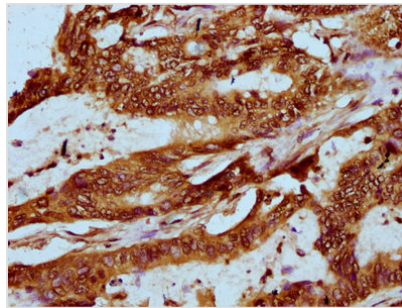
All lanes: HIST1H2AG antibody at 1µg/ml

Secondary

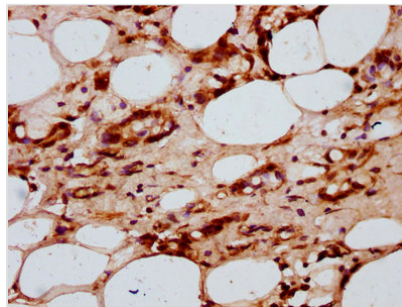
Goat polyclonal to rabbit IgG at 1/50000 dilution

Predicted band size: 15 kDa

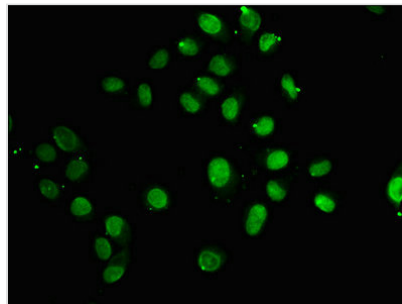
Observed band size: 15 kDa



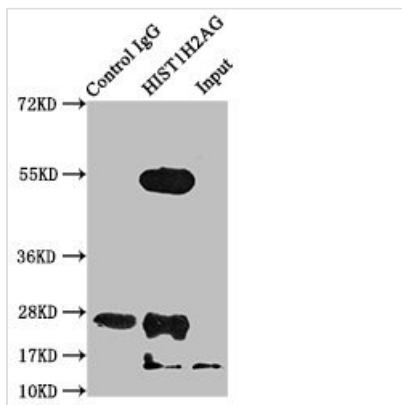
IHC image of CSB-PA010389OA118nforHU diluted at 1:20 and staining in paraffin-embedded human colon cancer performed on a Leica Bond™ system. After dewaxing and hydration, antigen retrieval was mediated by high pressure in a citrate buffer (pH 6.0). Section was blocked with 10% normal goat serum 30min at RT. Then primary antibody (1% BSA) was incubated at 4°C overnight. The primary is detected by a biotinylated secondary antibody and visualized using an HRP conjugated SP system.



IHC image of CSB-PA010389OA118nforHU diluted at 1:20 and staining in paraffin-embedded human breast cancer performed on a Leica Bond™ system. After dewaxing and hydration, antigen retrieval was mediated by high pressure in a citrate buffer (pH 6.0). Section was blocked with 10% normal goat serum 30min at RT. Then primary antibody (1% BSA) was incubated at 4°C overnight. The primary is detected by a biotinylated secondary antibody and visualized using an HRP conjugated SP system.



Immunofluorescence staining of HeLa cells with CSB-PA010389OA118nforHU at 1:5, counter-stained with DAPI. The cells were fixed in 4% formaldehyde, permeabilized using 0.2% Triton X-100 and blocked in 10% normal Goat Serum. The cells were then incubated with the antibody overnight at 4°C. The secondary antibody was Alexa Fluor 488-conjugated AffiniPure Goat Anti-Rabbit IgG(H+L).



Immunoprecipitating HIST1H2AG in NIH/3T3 whole cell lysate
 Lane 1: Rabbit control IgG instead of CSB-PA010389OA118nforHU in NIH/3T3 whole cell lysate. For western blotting, a HRP-conjugated Protein G antibody was used as the secondary antibody (1/2000)
 Lane 2: CSB-PA010389OA118nforHU (5µg) + NIH/3T3 whole cell lysate (500µg)
 Lane 3: NIH/3T3 whole cell lysate (20µg)