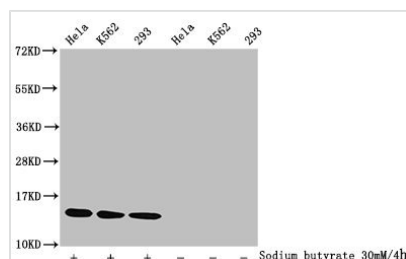




# Acetyl-HIST1H2BC (K15) Antibody

<b>Product Code</b>	CSB-PA010403OA15acHU
<b>Storage</b>	Upon receipt, store at -20°C or -80°C. Avoid repeated freeze.
<b>Uniprot No.</b>	P62807
<b>Immunogen</b>	Peptide sequence around site of Acetyl-Lys (15) derived from Human Histone H2B type 1-C/E/F/G/I
<b>Raised In</b>	Rabbit
<b>Species Reactivity</b>	Human
<b>Tested Applications</b>	ELISA, WB, IF, IP; Recommended dilution: WB:1:500-1:2000, IF:1:1-1:10, IP:1:200-1:2000
<b>Form</b>	Liquid
<b>Conjugate</b>	Non-conjugated
<b>Storage Buffer</b>	Preservative: 0.03% Proclin 300 Constituents: 50% Glycerol, 0.01M PBS, pH 7.4
<b>Purification Method</b>	Antigen Affinity Purified
<b>Isotype</b>	IgG
<b>Clonality</b>	Polyclonal
<b>Alias</b>	Histone H2B type 1-C/E/F/G/I (Histone H2B.1 A) (Histone H2B.a) (H2B/a) (Histone H2B.g) (H2B/g) (Histone H2B.h) (H2B/h) (Histone H2B.k) (H2B/k) (Histone H2B.l) (H2B/l), HIST1H2BC; HIST1H2BE; HIST1H2BF; HIST1H2BG; HIST1H2BI, H2BFL; H2BFH; H2BFG; H2BFA; H2BFK
<b>Immunogen Species</b>	Homo sapiens (Human)
<b>Research Area</b>	Epigenetics and Nuclear Signaling
<b>Target Names</b>	HIST1H2BC

## Image



### Western Blot

Detected samples: HeLa whole cell lysate, K562 whole cell lysate, 293 whole cell lysate;

Untreated (-) or treated (+) with 30mM sodium butyrate for 4h

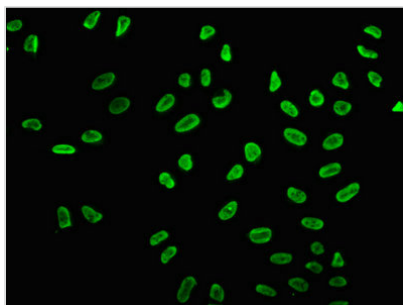
All lanes: HIST1H2BC antibody at 1:1000

Secondary

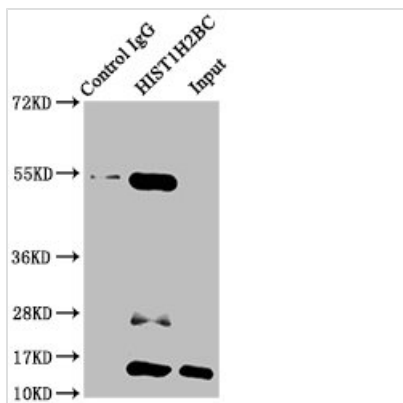
Goat polyclonal to rabbit IgG at 1/40000 dilution

Predicted band size: 14 kDa

Observed band size: 14 kDa



Immunofluorescence staining of HeLa cells (treated with 30mM sodium butyrate for 4h) with CSB-PA010403OA15acHU at 1:5, counter-stained with DAPI. The cells were fixed in 4% formaldehyde, permeabilized using 0.2% Triton X-100 and blocked in 10% normal Goat Serum. The cells were then incubated with the antibody overnight at 4°C. The secondary antibody was Alexa Fluor 488-conjugated AffiniPure Goat Anti-Rabbit IgG(H+L).



Immunoprecipitating HIST1H2BC in HepG2 whole cell lysate (treated with 30mM sodium butyrate for 4h)  
 Lane 1: Rabbit control IgG instead of CSB-PA010403OA15acHU in HepG2 whole cell lysate (treated with 30mM sodium butyrate for 4h). For western blotting, a HRP-conjugated Protein G antibody was used as the secondary antibody (1/2000)  
 Lane 2: CSB-PA010403OA15acHU (5µg) + HepG2 whole cell lysate (treated with 30mM sodium butyrate for 4h) (500µg)  
 Lane 3: HepG2 whole cell lysate (treated with 30mM sodium butyrate for 4h) (20µg)

## Usage

For Research Use Only. Not for use in diagnostic or therapeutic procedures.