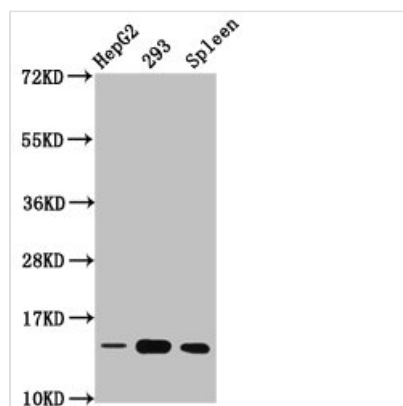




# HIST1H2BC (Ab-15) Antibody

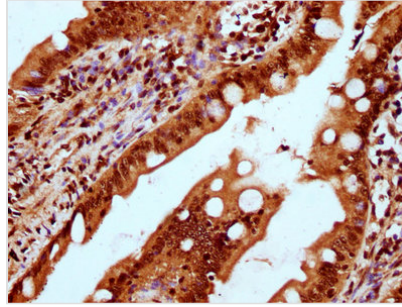
|                            |  |
|----------------------------|--|
| <b>Product Code</b>        | CSB-PA010403OA15nachU  |
| <b>Storage</b>             | Upon receipt, store at -20°C or -80°C. Avoid repeated freeze.  |
| <b>Uniprot No.</b>         | P62807   |
| <b>Immunogen</b>           | Peptide sequence around site of Lys (15) derived from Human Histone H2B type 1-C/E/F/G/I   |
| <b>Raised In</b>           | Rabbit   |
| <b>Species Reactivity</b>  | Human, Rat   |
| <b>Tested Applications</b> | ELISA, WB, IHC; Recommended dilution: WB:1:100-1:1000, IHC:1:10-1:100  |
| <b>Form</b>                | Liquid   |
| <b>Conjugate</b>           | Non-conjugated   |
| <b>Storage Buffer</b>      | Preservative: 0.03% Proclin 300<br>Constituents: 50% Glycerol, 0.01M PBS, pH 7.4   |
| <b>Purification Method</b> | Antigen Affinity Purified  |
| <b>Isotype</b>             | IgG  |
| <b>Clonality</b>           | Polyclonal   |
| <b>Alias</b>               | Histone H2B type 1-C/E/F/G/I (Histone H2B.1 A) (Histone H2B.a) (H2B/a) (Histone H2B.g) (H2B/g) (Histone H2B.h) (H2B/h) (Histone H2B.k) (H2B/k) (Histone H2B.l) (H2B/l), HIST1H2BC; HIST1H2BE; HIST1H2BF; HIST1H2BG; HIST1H2BI, H2BFL; H2BFH; H2BFG; H2BFA; H2BFK |
| <b>Immunogen Species</b>   | Homo sapiens (Human)   |
| <b>Research Area</b>       | Epigenetics and Nuclear Signaling  |
| <b>Target Names</b>        | HIST1H2BC  |

## Image



### Western Blot

Positive WB detected in: HepG2 whole cell lysate, 293 whole cell lysate, Rat spleen tissue  
All lanes: HIST1H2BC antibody at 0.76µg/ml  
Secondary  
Goat polyclonal to rabbit IgG at 1/50000 dilution  
Predicted band size: 14 kDa  
Observed band size: 14 kDa



IHC image of CSB-PA010403OA15nacHU diluted at 1:20 and staining in paraffin-embedded human small intestine tissue performed on a Leica Bond™ system. After dewaxing and hydration, antigen retrieval was mediated by high pressure in a citrate buffer (pH 6.0). Section was blocked with 10% normal goat serum 30min at RT. Then primary antibody (1% BSA) was incubated at 4°C overnight. The primary is detected by a biotinylated secondary antibody and visualized using an HRP conjugated SP system.