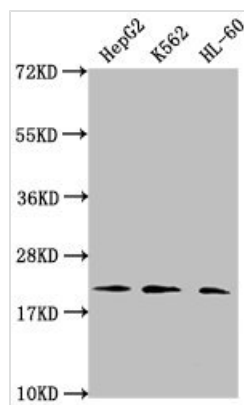




Di-methyl-HIST1H1C (K45) Antibody

Product Code	CSB-PA010378OA45me2HU
Storage	Upon receipt, store at -20°C or -80°C. Avoid repeated freeze.
Uniprot No.	P16403
Immunogen	Peptide sequence around site of Di-methyl-Lys (45) derived from Human Histone H1.2
Raised In	Rabbit
Species Reactivity	Human
Tested Applications	ELISA, WB, ICC, IP, ChIP; Recommended dilution: WB:1:1000-1:5000, ICC:1:10-1:100, IP:1:200-1:2000
Form	Liquid
Conjugate	Non-conjugated
Storage Buffer	Preservative: 0.03% Proclin 300 Constituents: 50% Glycerol, 0.01M PBS, pH 7.4
Purification Method	Antigen Affinity Purified
Isotype	IgG
Clonality	Polyclonal
Alias	Histone H1.2 (Histone H1c) (Histone H1d) (Histone H1s-1), HIST1H1C, H1F2
Immunogen Species	Homo sapiens (Human)
Research Area	Epigenetics and Nuclear Signaling
Target Names	HIST1H1C

Image



Western Blot

Positive WB detected in: HepG2 whole cell lysate, K562 whole cell lysate, HL60 whole cell lysate

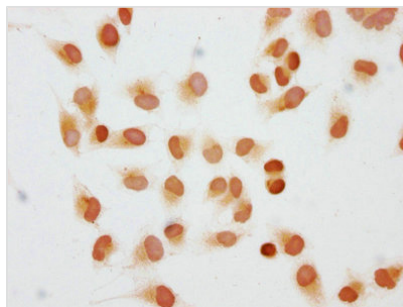
All lanes: HIST1H1C antibody at 1:2000

Secondary

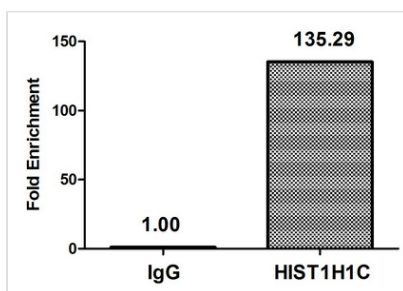
Goat polyclonal to rabbit IgG at 1/40000 dilution

Predicted band size: 22 kDa

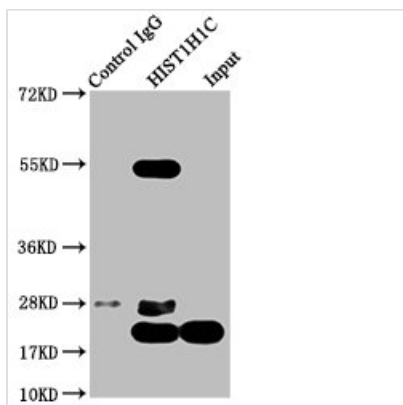
Observed band size: 22 kDa



Immunocytochemistry analysis of CSB-PA010378OA45me2HU diluted at 1:10 and staining in HeLa cells performed on a Leica Bond™ system. The cells were fixed in 4% formaldehyde, permeabilized using 0.2% Triton X-100 and blocked with 10% normal goat serum 30min at RT. Then primary antibody (1% BSA) was incubated at 4°C overnight. The primary is detected by a biotinylated secondary antibody and visualized using an HRP conjugated SP system.



Chromatin Immunoprecipitation HeLa (4×10^6) were treated with Micrococcal Nuclease, sonicated, and immunoprecipitated with 5μg anti-HIST1H1C (CSB-PA010378OA45me2HU) or a control normal rabbit IgG. The resulting ChIP DNA was quantified using real-time PCR with primers against the β-Globin promoter.



Immunoprecipitating HIST1H1C in HeLa whole cell lysate

Lane 1: Rabbit control IgG instead of CSB-PA010378OA45me2HU in HeLa whole cell lysate. For western blotting, a HRP-conjugated Protein G antibody was used as the secondary antibody (1/2000)

Lane 2: CSB-PA010378OA45me2HU (5μg) + HeLa whole cell lysate (1mg)

Lane 3: HeLa whole cell lysate (20μg)