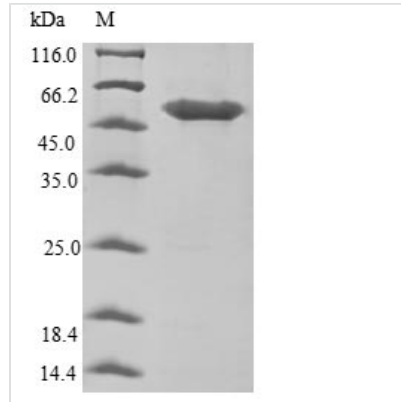




Recombinant Human Haptoglobin (HP)

Product Code	CSB-EP010691HU
Relevance	As a result of hemolysis, hemoglobin is found to accumulate in the kidney and is secreted in the urine. Haptoglobin captures, and combines with free plasma hemoglobin to allow hepatic recycling of heme iron and to prevent kidney damage. Haptoglobin also acts as an Antimicrobial; Antioxidant, has antibacterial activity and plays a role in modulating many aspects of the acute phase response. Hemoglobin/haptoglobin complexes are rapidly cleared by the macrophage CD163 scavenger receptor expressed on the surface of liver Kupfer cells through an endocytic lysosomal degradation pathway.
Abbreviation	Recombinant Human HP protein
Storage	The shelf life is related to many factors, storage state, buffer ingredients, storage temperature and the stability of the protein itself. Generally, the shelf life of liquid form is 6 months at -20°C/-80°C. The shelf life of lyophilized form is 12 months at -20°C/-80°C.
Uniprot No.	P00738
Product Type	Recombinant Protein
Immunogen Species	Homo sapiens (Human)
Purity	Greater than 85% as determined by SDS-PAGE.
Sequence	VDSGNDVTDIADDGCPKPPEIAHGYVEHSVRYQCKNYYKLRTEGDGVYTLND KKQWINKAVGDKLPECEADDGCPKPPEIAHGYVEHSVRYQCKNYYKLRTEGD GVYTLNNEKQWINKAVGDKLPECEAVCGKPKNPANPVQRILGGHLDKGSFP WQAKMVSHHNLTTGATLINEQWLLTTAKNLFNHSENATAKDIAPTLTLYVGKK QLVEIEKVVLHPNYSQVDIGLIKQKQKSVNERVMPICLPSKDYAEVGRVGYVS GWGRNANFKFTDHLKYVMLPVADQDQCIRHYEGSTVPEKKTPKSPVGVQPIL NEHTFCAGMSKYQEDTCYGDAGSAFAVHDLLEEDTWYATGILSFDKSCAVAEY GVYVKVTSIQDWVQKTIEN
Research Area	Cardiovascular
Source	E.coli
Target Names	HP
Protein Names	Alternative name(s):Zonulin
Expression Region	19-406aa
Notes	Repeated freezing and thawing is not recommended. Store working aliquots at 4°C for up to one week.
Tag Info	N-terminal 6xHis-B2M-tagged
Mol. Weight	57.3 kDa
Protein Length	Full Length of Mature Protein
Image	



(Tris-Glycine gel) Discontinuous SDS-PAGE (reduced) with 5% enrichment gel and 15% separation gel.

Reconstitution

We recommend that this vial be briefly centrifuged prior to opening to bring the contents to the bottom. Please reconstitute protein in deionized sterile water to a concentration of 0.1-1.0 mg/mL. We recommend to add 5-50% of glycerol (final concentration) and aliquot for long-term storage at -20°C/-80°C. Our default final concentration of glycerol is 50%. Customers could use it as reference.

Shelf Life

The shelf life is related to many factors, storage state, buffer ingredients, storage temperature and the stability of the protein itself. Generally, the shelf life of liquid form is 6 months at -20°C/-80°C. The shelf life of lyophilized form is 12 months at -20°C/-80°C.