



Recombinant Human Dual specificity protein kinase CLK2 (CLK2), partial

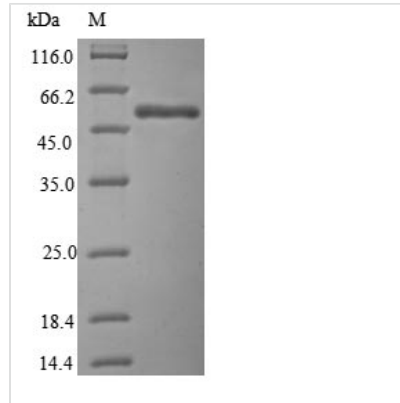
Product Code	CSB-EP005558HU1a6
Relevance	Dual specificity kinase acting on both serine/threonine and tyrosine-containing substrates. Phosphorylates serine- and arginine-rich (SR) proteins of the spliceosomal complex. May be a constituent of a network of regulatory mechanisms that enable SR proteins to control RNA splicing and can cause redistribution of SR proteins from speckles to a diffuse nucleoplasmic distribution. Acts as a suppressor of hepatic gluconeogenesis and glucose output by repressing PPARGC1A transcriptional activity on gluconeogenic genes via its phosphorylation. Phosphorylates PPP2R5B thereby stimulating the assembly of PP2A phosphatase with the PPP2R5B-AKT1 complex leading to dephosphorylation of AKT1. Phosphorylates: PTPN1, SRSF1 and SRSF3. Regulates the alternative splicing of tissue factor (F3) pre-mRNA in endothelial cells.
Abbreviation	Recombinant Human CLK2 protein, partial
Storage	The shelf life is related to many factors, storage state, buffer ingredients, storage temperature and the stability of the protein itself. Generally, the shelf life of liquid form is 6 months at -20°C/-80°C. The shelf life of lyophilized form is 12 months at -20°C/-80°C.
Uniprot No.	P49760
Product Type	Recombinant Protein
Immunogen Species	Homo sapiens (Human)
Purity	Greater than 85% as determined by SDS-PAGE.
Sequence	<p> RRAKSVEDDAEGHLIYHVGDWLQERYEIVSTLGEETFGRVVQCVDHRRGGAR VALKIIKNVEKYKEAARLEINVLEKINEKDPDNKNLCVQMFDWFDYHGHMCISF ELLGLSTFDLKDNNYLPYPIHQVRHMAFQLCQAVKFLHDNKLTHDLPENIL FVNSDYELTYNLEKKRDEKSVKSTAVRVVDFGSATFDHEHHSTIVSTRHYRAP EVILELGSQPCDVWSIGCIIFEYYVGFRLFQTHDNREHLAMMERILGPIPSRMI RKTRKQKYFYRGRLDWDENTSAGRYVRENCKPLRRYLTSEAEHHQLFDLIE SMLEYEPAKRLTLGEALQHPFFARLRAEPPNKLWDSSRDISR </p>
Research Area	Cell Biology
Source	E.coli
Target Names	CLK2
Protein Names	CDC-like kinase 2
Expression Region	138-499aa
Notes	Repeated freezing and thawing is not recommended. Store working aliquots at 4°C for up to one week.
Tag Info	N-terminal 6xHis-B2M-tagged



Mol. Weight 56.7 kDa

Protein Length Partial

Image



(Tris-Glycine gel) Discontinuous SDS-PAGE (reduced) with 5% enrichment gel and 15% separation gel.

Reconstitution

We recommend that this vial be briefly centrifuged prior to opening to bring the contents to the bottom. Please reconstitute protein in deionized sterile water to a concentration of 0.1-1.0 mg/mL. We recommend to add 5-50% of glycerol (final concentration) and aliquot for long-term storage at -20°C/-80°C. Our default final concentration of glycerol is 50%. Customers could use it as reference.

Shelf Life

The shelf life is related to many factors, storage state, buffer ingredients, storage temperature and the stability of the protein itself. Generally, the shelf life of liquid form is 6 months at -20°C/-80°C. The shelf life of lyophilized form is 12 months at -20°C/-80°C.