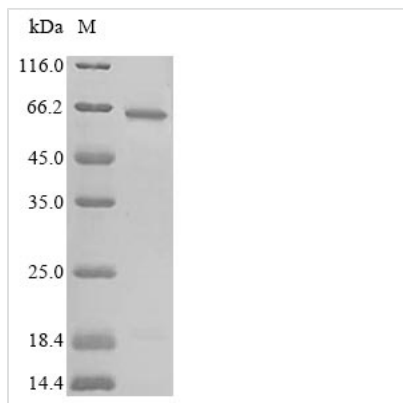




Recombinant Human Cystathionine beta-synthase (CBS), partial

Product Code	CSB-EP004589HU1
Relevance	Only known pyridoxal phosphate-dependent enzyme that contains he. Important regulator of hydrogen sulfide, especially in the brain, utilizing cysteine instead of serine to catalyze the formation of hydrogen sulfide. Hydrogen sulfide is a gastratransmitter with signaling and cytoprotective effects such as acting as a neuromodulator in the brain to protect neurons against hypoxic injury .
Abbreviation	Recombinant Human CBS protein, partial
Storage	The shelf life is related to many factors, storage state, buffer ingredients, storage temperature and the stability of the protein itself. Generally, the shelf life of liquid form is 6 months at -20°C/-80°C. The shelf life of lyophilized form is 12 months at -20°C/-80°C.
Uniprot No.	P35520
Alias	Beta-thionase;Serine sulfhydrase
Product Type	Recombinant Protein
Immunogen Species	Homo sapiens (Human)
Purity	Greater than 90% as determined by SDS-PAGE.
Sequence	MPSETPQAEVGP TGCPHRSGPHSAKGSLEKGSPEDEKEAKEPLWIRPDAPSRC TWQLGRPASESPHHHTAPAKSPKILPDILKKIGDTPMVRINKIGKKFGLKCELLA KCEFFNAGGSVKDRISLRMIEDAERDGLKPGDTIIIEPTSGNTGIGLALAAAVR GYRCIIVMPEKMSSEKVDVLRALGAEIVRTPTNARFDSPEHVGVAVRLKNEIP NSHILDQYRNASNPLAHYDTTADEILQQCDGKLDMLVASVGTGGTITGIARKLK EKCPGCRIGVDPEGSILAEPEELNQTEQTTYEVEGIGYDFIPTVLDRTVVDKWF KSNDEEAFTFARMLIAQEGLLCGGSAGSTVAVAVKAAQELQEGQRCVVILPDS VRNYMTKFLSDRWMLQKGFLKEEDLTEKKPWWHLR
Research Area	Metabolism
Source	E.coli
Target Names	CBS
Expression Region	1-413aa
Notes	Repeated freezing and thawing is not recommended. Store working aliquots at 4°C for up to one week.
Tag Info	N-terminal 6xHis-SUMO-tagged
Mol. Weight	61.4kDa
Protein Length	Partial
Image	



(Tris-Glycine gel) Discontinuous SDS-PAGE (reduced) with 5% enrichment gel and 15% separation gel.

Reconstitution

We recommend that this vial be briefly centrifuged prior to opening to bring the contents to the bottom. Please reconstitute protein in deionized sterile water to a concentration of 0.1-1.0 mg/mL. We recommend to add 5-50% of glycerol (final concentration) and aliquot for long-term storage at -20°C/-80°C. Our default final concentration of glycerol is 50%. Customers could use it as reference.

Shelf Life

The shelf life is related to many factors, storage state, buffer ingredients, storage temperature and the stability of the protein itself. Generally, the shelf life of liquid form is 6 months at -20°C/-80°C. The shelf life of lyophilized form is 12 months at -20°C/-80°C.