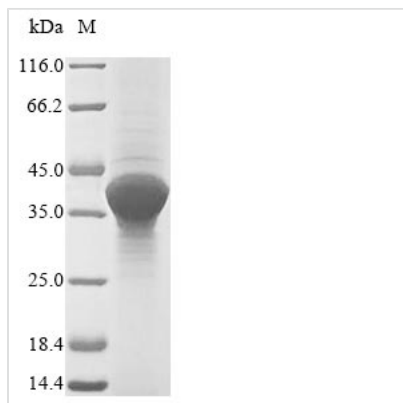




Recombinant *Yersinia enterocolitica* Outer membrane virulence protein YopE (yopE)

Product Code	CSB-CF330087YQAa2
Relevance	Essential virulence determinant; cytotoxic effector, involved in resistance to phagocytosis
Abbreviation	Recombinant <i>Yersinia enterocolitica</i> yopE protein
Storage	The shelf life is related to many factors, storage state, buffer ingredients, storage temperature and the stability of the protein itself. Generally, the shelf life of liquid form is 6 months at -20°C/-80°C. The shelf life of lyophilized form is 12 months at -20°C/-80°C.
Uniprot No.	P31492
Product Type	Transmembrane Protein
Immunogen Species	<i>Yersinia enterocolitica</i>
Purity	≥ 90% as determined by SDS-PAGE.
Sequence	MKISSFISTSLPLPASVSGSSSVGEMSGRSVSQQKSDQYANNLAGRTESPQG SSLASRIIERLSSMAHSVIGFIQRMFSEGSHKPVVTPALTPAQMPSPSFS QLAAETLPKYMQLSSLDAETLQKNHDQFATGSGPLRGSITQCQGLMQFCGG ELQAEASAILNTPVCGIPFSQWGTVGGAAASAYVASGVDLTQAANEIKGLGQQM QQLSLM
Research Area	Others
Source	in vitro E.coli expression system
Target Names	yopE
Expression Region	1-219aa
Notes	Repeated freezing and thawing is not recommended. Store working aliquots at 4°C for up to one week.
Tag Info	N-terminal 6xHis-SUMO-tagged
Mol. Weight	38.9kDa
Protein Length	Full Length

Image



(Tris-Glycine gel) Discontinuous SDS-PAGE (reduced) with 5% enrichment gel and 15% separation gel.

Reconstitution

We recommend that this vial be briefly centrifuged prior to opening to bring the contents to the bottom. Please reconstitute protein in deionized sterile water to a concentration of 0.1-1.0 mg/mL. We recommend to add 5-50% of glycerol (final concentration) and aliquot for long-term storage at -20°C/-80°C. Our default final concentration of glycerol is 50%. Customers could use it as reference.

Shelf Life

The shelf life is related to many factors, storage state, buffer ingredients, storage temperature and the stability of the protein itself. Generally, the shelf life of liquid form is 6 months at -20°C/-80°C. The shelf life of lyophilized form is 12 months at -20°C/-80°C.