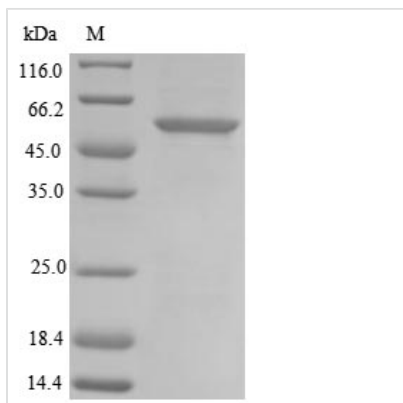




Recombinant Dog Inactive pancreatic lipase-related protein 1 (PNLIPRP1)

Product Code	CSB-EP018263DOa0
Relevance	May function as inhibitor of dietary triglyceride digestion. Lacks detectable lipase activity towards triglycerides, diglycerides, phosphatidylcholine, galactolipids or cholesterol esters (in vitro).
Abbreviation	Recombinant Dog PNLIPRP1 protein
Storage	The shelf life is related to many factors, storage state, buffer ingredients, storage temperature and the stability of the protein itself. Generally, the shelf life of liquid form is 6 months at -20°C/-80°C. The shelf life of lyophilized form is 12 months at -20°C/-80°C.
Uniprot No.	P06857
Product Type	Recombinant Protein
Immunogen Species	Canis lupus familiaris (Dog) (Canis familiaris)
Purity	≥ 85% as determined by SDS-PAGE.
Sequence	KEVCYEQIGCFSDAEPWAGTAIRPLKVLPSPERIGTRFLLYTNKNPNNFQTL PSPDSTIEASNFQTDKKTRFIIHGFIDKGEENWLLDMCKNMFKVEEVNCICVDW KKGTSQTSYTQAANNVRVVGQAQMLSMLSANYSYSPSQVQLIGHSLGAHVA GEAGSRTPGLGRITGLDPVEASFQGTPEEVRLDPTDADFVDVIHTDAAPLIPFL GFGTSQQMGHLDFPNGGEEMP GCKKNALSQIVDLGDIWEGTRDFVACNHL RSYKYYSESILNPDGFASYPCASYRAFESNKCFCPCPDQGCPQMGHYADKFAV KTSDETQKYFLNTGDSSNFARWRYGVSITLSGKRATGQAKVALFGSKGNTHQ FNIFKGILKPGSTHSNEFDAKLDVGTIEKVKFLWNNNVNPTFPKVGAAKITVQ KGEEKTVHSFCSESTVREDVLLTLTPC
Research Area	Signal Transduction
Source	E.coli
Target Names	PNLIPRP1
Protein Names	Short name:PL-RP1
Expression Region	18-467aa
Notes	Repeated freezing and thawing is not recommended. Store working aliquots at 4°C for up to one week.
Tag Info	N-terminal 6xHis-tagged
Mol. Weight	55.2 kDa
Protein Length	Full Length of Mature Protein
Image	



(Tris-Glycine gel) Discontinuous SDS-PAGE (reduced) with 5% enrichment gel and 15% separation gel.

Reconstitution

We recommend that this vial be briefly centrifuged prior to opening to bring the contents to the bottom. Please reconstitute protein in deionized sterile water to a concentration of 0.1-1.0 mg/mL. We recommend to add 5-50% of glycerol (final concentration) and aliquot for long-term storage at -20°C/-80°C. Our default final concentration of glycerol is 50%. Customers could use it as reference.

Shelf Life

The shelf life is related to many factors, storage state, buffer ingredients, storage temperature and the stability of the protein itself. Generally, the shelf life of liquid form is 6 months at -20°C/-80°C. The shelf life of lyophilized form is 12 months at -20°C/-80°C.