

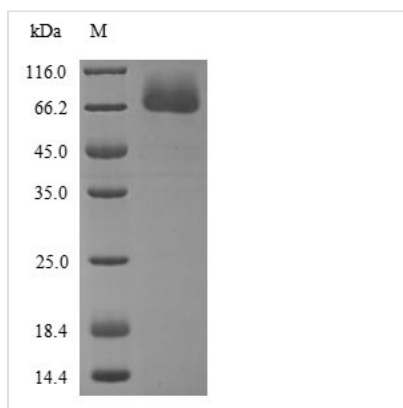


Recombinant Human Proto-oncogene c-Rel (REL), partial

Product Code	CSB-YP019552HU
Relevance	<p>Proto-oncogene that may play a role in differentiation and lymphopoiesis. NF-kappa-B is a pleiotropic transcription factor which is present in almost all cell types and is involved in many biological processes such as inflammation, immunity, differentiation, cell growth, tumorigenesis and apoptosis. NF-kappa-B is a homo- or heterodimeric complex formed by the Rel-like domain-containing proteins RELA/p65, RELB, NFkB1/p105, NFkB1/p50, REL and NFkB2/p52. The dimers bind at kappa-B sites in the DNA of their target genes and the individual dimers have distinct preferences for different kappa-B sites that they can bind with distinguishable affinity and specificity. Different dimer combinations act as transcriptional activators or repressors, respectively. NF-kappa-B is controlled by various mechanisms of post-translational modification and subcellular compartmentalization as well as by interactions with other cofactors or corepressors. NF-kappa-B complexes are held in the cytoplasm in an inactive state complexed with members of the NF-kappa-B inhibitor (I-kappa-B) family. In a conventional activation pathway, I-kappa-B is phosphorylated by I-kappa-B kinases (IKKs) in response to different activators, subsequently degraded thus liberating the active NF-kappa-B complex which translocates to the nucleus. The NF-kappa-B heterodimer RELA/p65-c-Rel is a transcriptional activator.</p>
Abbreviation	Recombinant Human REL protein, partial
Storage	The shelf life is related to many factors, storage state, buffer ingredients, storage temperature and the stability of the protein itself. Generally, the shelf life of liquid form is 6 months at -20°C/-80°C. The shelf life of lyophilized form is 12 months at -20°C/-80°C.
Uniprot No.	Q04864
Product Type	Recombinant Protein
Immunogen Species	Homo sapiens (Human)
Purity	≥ 85% as determined by SDS-PAGE.
Sequence	<p>SGAYNPYIEIIIEQPRQRGMRFYKCEGRSAGSIPGEHSTDNNRTYPSIQIMNYY GKGKVRITLVTKNDPYKPHPHDLVGKDCRDGYEAEFGQERRPLFFQNLGIRC VKKKEVKEAIIIRIKAGINPFNVPEKQLNDIEDCDLNVVRLCFQVFLPDEHGNLT TALPPVVSNIYDNRAPNTAELRICRVNKNCGSVRGGDEIFLLCDKVQKDDIEV RFVLDNWEAKGIFSQADVHRQVAIVFKTPPYCKAITEPVTVKMQLRRPSDQEV SESMDFRYLPDEKDTYGNKAKKQKTTLLFQKLCQDHVNFPERPRPGLLSIGE GRYFKKEPNLFSHDAVVREMPGTGVSSQAESYYPSPGPISSGLSHHASMPLP SSSWSSVAHPTPRSGNTNPLSSFSTRTLPSNSQGIPFLRIPVGNLDLNASNACI YNNADDIVGMEASSMPSADLYGISDPNMLSNCSVNMMTTSSDSMGETDNPRL LSMNLNPNCSVLDPRDLRQLHQMSSSSMSAGANSNTTVFVSQSDAFEGS DFSCADNSMINESGPSNSTNPNSHG FVQDSQYSGIGSMQNEQLSDSFPYEF</p>



Research Area	Transcription
Source	Yeast
Target Names	REL
Expression Region	3-616aa
Notes	Repeated freezing and thawing is not recommended. Store working aliquots at 4°C for up to one week.
Tag Info	N-terminal 6xHis-tagged
Mol. Weight	66.6 kDa
Protein Length	Partial of Isoform 2

Image


(Tris-Glycine gel) Discontinuous SDS-PAGE (reduced) with 5% enrichment gel and 15% separation gel.

Reconstitution We recommend that this vial be briefly centrifuged prior to opening to bring the contents to the bottom. Please reconstitute protein in deionized sterile water to a concentration of 0.1-1.0 mg/mL. We recommend to add 5-50% of glycerol (final concentration) and aliquot for long-term storage at -20°C/-80°C. Our default final concentration of glycerol is 50%. Customers could use it as reference.

Shelf Life The shelf life is related to many factors, storage state, buffer ingredients, storage temperature and the stability of the protein itself. Generally, the shelf life of liquid form is 6 months at -20°C/-80°C. The shelf life of lyophilized form is 12 months at -20°C/-80°C.