



# Recombinant Human Protein disulfide-isomerase (P4HB), partial

<b>Product Code</b>	CSB-YP017342HU1
<b>Relevance</b>	This multifunctional protein catalyzes the formation, breakage and rearrangement of disulfide bonds. At the cell surface, it acts as a reductase that cleaves disulfide bonds of proteins attached to the cell. It may therefore cause structural modifications of exofacial proteins. Inside the cell, it acts to form/rearrange disulfide bonds of nascent proteins. At high concentrations, it functions as a chaperone that inhibits aggregation of misfolded proteins. At low concentrations, it facilitates aggregation (anti-chaperone activity). It may be involved with other chaperones in the structural modification of the TG precursor in hormone biogenesis. It also acts as a structural subunit of various enzymes such as prolyl 4-hydroxylase and microsomal triacylglycerol transfer protein MTP.
<b>Abbreviation</b>	Recombinant Human P4HB protein, partial
<b>Storage</b>	The shelf life is related to many factors, storage state, buffer ingredients, storage temperature and the stability of the protein itself. Generally, the shelf life of liquid form is 6 months at -20°C/-80°C. The shelf life of lyophilized form is 12 months at -20°C/-80°C.
<b>Uniprot No.</b>	P07237
<b>Product Type</b>	Recombinant Protein
<b>Immunogen Species</b>	Homo sapiens (Human)
<b>Purity</b>	≥ 85% as determined by SDS-PAGE.
<b>Sequence</b>	DAPEEEDHVLVLRKSNFAEALAAHKYLLVEFYAPWCGHCKALAPEYAKAAGKL KAEGSEIRLAKVDATEESDLAQQYGVRYPTIKFFRNGDTASPKEYTAGREAD DIVNWLKKRTGPAATTLPDGAAAESLVESSEVAVIGFFKDVESDSAKQFLQAA EAIDDIPFGITSNSDVFSKYQLDKDGVVLFKKFDEGRNNEFEVTKENLLDFIKH NQLPLVIEFTEQTAPKIFGGEIKTHILLFLPKSVSDYDGKLSNFKTAAESFKGKIL FIFIDSDHTDNQRILEFFGLKKEECPAVRLITLLEEMTKYKPESEELTAERITEFC HRFLEGKIKPHLMSQELPEDWDKQPVKVLVGKNFEDVAFDEKKNVFEFYAP WCGHCKQLAPIWDKLGETYKDHENIVIAKMDSTANEVEAVKVHSFPTLKFFPA SADRTVIDYNGERTLDGFKKFLESGGQDGAGDDDDLEDLEEAEPDMEEDDD QKAVK
<b>Research Area</b>	Cancer
<b>Source</b>	Yeast
<b>Target Names</b>	P4HB
<b>Protein Names</b>	Cellular thyroid hormone-binding protein;Prolyl 4-hydroxylase subunit beta55
<b>Expression Region</b>	18-505aa
<b>Notes</b>	Repeated freezing and thawing is not recommended. Store working aliquots at 4°C for up to one week.

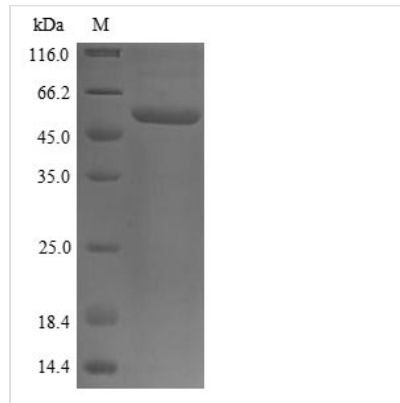


**Tag Info** N-terminal 6xHis-tagged and C-terminal 10xHis-tagged

**Mol. Weight** 59.4 kDa

**Protein Length** Partial

**Image**



(Tris-Glycine gel) Discontinuous SDS-PAGE (reduced) with 5% enrichment gel and 15% separation gel.

**Reconstitution**

We recommend that this vial be briefly centrifuged prior to opening to bring the contents to the bottom. Please reconstitute protein in deionized sterile water to a concentration of 0.1-1.0 mg/mL. We recommend to add 5-50% of glycerol (final concentration) and aliquot for long-term storage at -20°C/-80°C. Our default final concentration of glycerol is 50%. Customers could use it as reference.

**Shelf Life**

The shelf life is related to many factors, storage state, buffer ingredients, storage temperature and the stability of the protein itself. Generally, the shelf life of liquid form is 6 months at -20°C/-80°C. The shelf life of lyophilized form is 12 months at -20°C/-80°C.