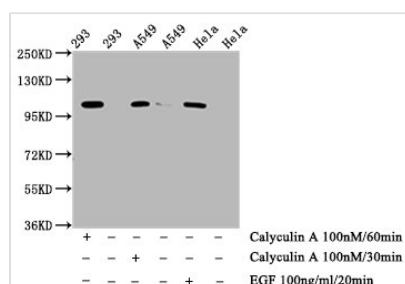




Phospho-ERN1 (S724) Recombinant Monoclonal Antibody

Product Code	CSB-RA007795A724phHU
Abbreviation	Serine/threonine-protein kinase/endoribonuclease IRE1
Storage	Upon receipt, store at -20°C or -80°C. Avoid repeated freeze.
Uniprot No.	O75460
Immunogen	A synthesized peptide derived from Human Phospho-ERN1 (S724)
Species Reactivity	Human
Tested Applications	ELISA, WB, IF; Recommended dilution: WB:1:500-1:5000, IF:1:20-1:200
Relevance	Senses unfolded proteins in the lumen of the endoplasmic reticulum via its N-terminal domain which leads to enzyme auto-activation (PubMed:9637683, PubMed:11175748, PubMed:12637535). The active endoribonuclease domain splices XBP1 mRNA to generate a new C-terminus, converting it into a potent unfolded-protein response transcriptional activator and triggering growth arrest and apoptosis (PubMed:24508390).
Form	Liquid
Conjugate	Non-conjugated
Storage Buffer	Rabbit IgG in 10mM phosphate buffered saline , pH 7.4, 150mM sodium chloride, 0.05% BSA, 0.02% sodium azide and 50% glycerol.
Purification Method	Affinity-chromatography
Isotype	Rabbit IgG
Clonality	Monoclonal
Alias	Serine/threonine-protein kinase/endoribonuclease IRE1, Endoplasmic reticulum-to-nucleus signaling 1, hIRE1p, Ire1-alpha, IRE1a, Serine/threonine-protein kinase, Endoribonuclease, ERN1
Immunogen Species	Homo sapiens (Human)
Research Area	Signal Transduction
Target Names	ERN1
Clone No.	1F12

Image



Western Blot

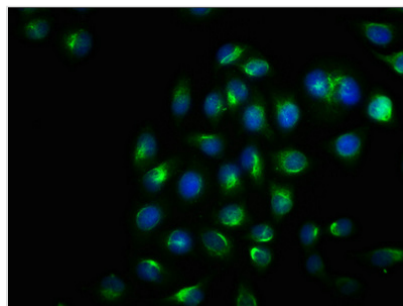
Positive WB detected in: 293 whole cell lysate, A549 whole cell lysate, HeLa whole cell lysate (treated with Calyculin A or EGF)

All lanes: Phospho-ERN1 antibody at 0.75µg/ml
Secondary

Goat polyclonal to rabbit IgG at 1/50000 dilution

Predicted band size: 110 kDa

Observed band size: 110 kDa



Immunofluorescence staining of HeLa cells with CSB-RA007795A724pH_U at 1:100, counter-stained with DAPI. The cells were fixed in 4% formaldehyde, permeabilized using 0.2% Triton X-100 and blocked in 10% normal Goat Serum. The cells were then incubated with the antibody overnight at 4°C. The secondary antibody was Alexa Fluor 488-conjugated AffiniPure Goat Anti-Rabbit IgG(H+L).

Usage

For Research Use Only. Not for use in diagnostic or therapeutic procedures.