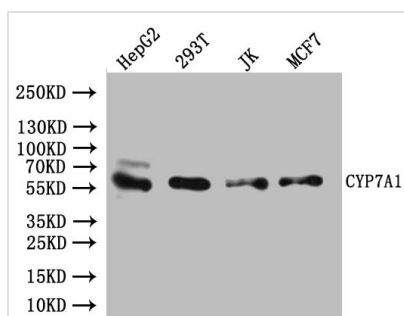




CYP7A1 Antibody

Product Code	CSB-PA006460LA01HU
Storage	Upon receipt, store at -20°C or -80°C. Avoid repeated freeze.
Uniprot No.	P22680
Immunogen	Recombinant Human Cholesterol 7-alpha-monooxygenase protein
Raised In	Rabbit
Species Reactivity	Human, Mouse
Tested Applications	ELISA, WB, IHC; Recommended dilution: WB:1:1000-1:5000, IHC:1:100-1:300
Form	Liquid
Conjugate	Non-conjugated
Storage Buffer	Preservative: 0.02% sodium azide Constituents: 50% Glycerol, 0.01M PBS, pH 7.4
Purification Method	Antigen affinity purification
Isotype	IgG
Clonality	Polyclonal
Product Type	Polyclonal Antibody
Immunogen Species	Homo sapiens (Human)
Research Area	Cardiovascular
Target Names	CYP7A1

Image



Western Blot

Positive WB detected in: HepG2 whole cell lysate, 293T whole cell lysate, JK whole cell lysate, MCF7 whole cell lysate

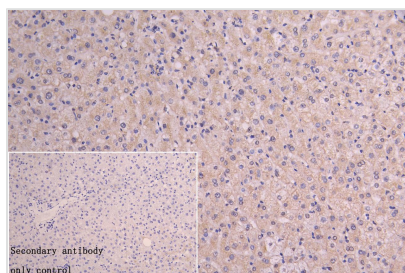
All lanes: CYP7A1 Antibody at 1:1000

Secondary

Goat polyclonal to rabbit IgG at 1/50000 dilution

Predicted band size: 58 kDa

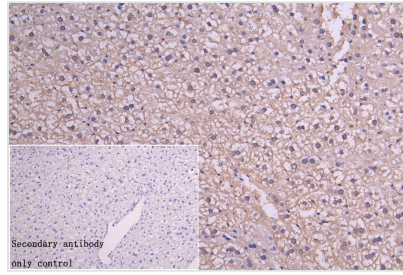
Observed band size: 58 kDa



IHC image of CSB-PA006460LA01HU diluted at 1:150 and staining in paraffin-embedded human liver tissue performed on a Leica Bond™ system. After dewaxing and hydration, antigen retrieval was mediated by high pressure in a citrate buffer (pH 6.0). Section was blocked with 10% normal goat serum 30min at RT. Then primary antibody (1% BSA) was incubated at 4°C overnight. The primary is detected by a Goat anti-rabbit polymer IgG labeled by HRP and visualized using 0.05% DAB. Secondary antibody only control: uses 1% BSA instead of



primary antibody



IHC image of CSB-PA006460LA01HU diluted at 1:150 and staining in paraffin-embedded mouse liver tissue performed on a Leica Bond™ system. After dewaxing and hydration, antigen retrieval was mediated by high pressure in a citrate buffer (pH 6.0). Section was blocked with 10% normal goat serum 30min at RT. Then primary antibody (1% BSA) was incubated at 4°C overnight. The primary is detected by a Goat anti-rabbit polymer IgG labeled by HRP and visualized using 0.05% DAB. Secondary antibody only control: uses 1% BSA instead of primary antibody

Usage

For Research Use Only. Not for use in diagnostic or therapeutic procedures.