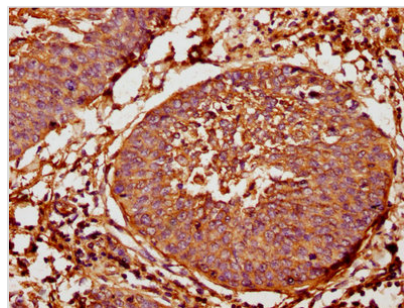




TAP2 Antibody

Product Code	CSB-PA22539A0Rb
Storage	Upon receipt, store at -20°C or -80°C. Avoid repeated freeze.
Uniprot No.	Q03519
Immunogen	Recombinant Human Antigen peptide transporter 2 protein (473-615AA)
Raised In	Rabbit
Species Reactivity	Human
Tested Applications	ELISA, IHC; Recommended dilution: IHC:1:200-1:500
Form	Liquid
Conjugate	Non-conjugated
Storage Buffer	Preservative: 0.03% Proclin 300 Constituents: 50% Glycerol, 0.01M PBS, pH 7.4
Purification Method	>95%, Protein G purified
Isotype	IgG
Clonality	Polyclonal
Alias	Antigen peptide transporter 2 (APT2) (ATP-binding cassette sub-family B member 3) (Peptide supply factor 2) (Peptide transporter PSF2) (PSF-2) (Peptide transporter TAP2) (Peptide transporter involved in antigen processing 2) (Really interesting new gene 11 protein), TAP2, ABCB3 PSF2 RING11 Y1
Immunogen Species	Homo sapiens (Human)
Research Area	Tags & Cell Markers
Target Names	TAP2

Image



IHC image of CSB-PA22539A0Rb diluted at 1:400 and staining in paraffin-embedded human cervical cancer performed on a Leica Bond™ system. After dewaxing and hydration, antigen retrieval was mediated by high pressure in a citrate buffer (pH 6.0). Section was blocked with 10% normal goat serum 30min at RT. Then primary antibody (1% BSA) was incubated at 4°C overnight. The primary is detected by a biotinylated secondary antibody and visualized using an HRP conjugated SP system.

Usage

For Research Use Only. Not for use in diagnostic or therapeutic procedures.